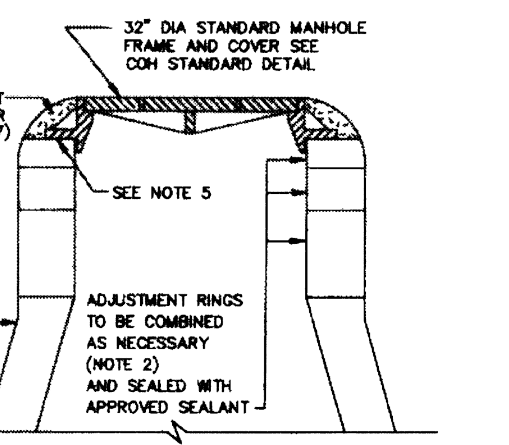
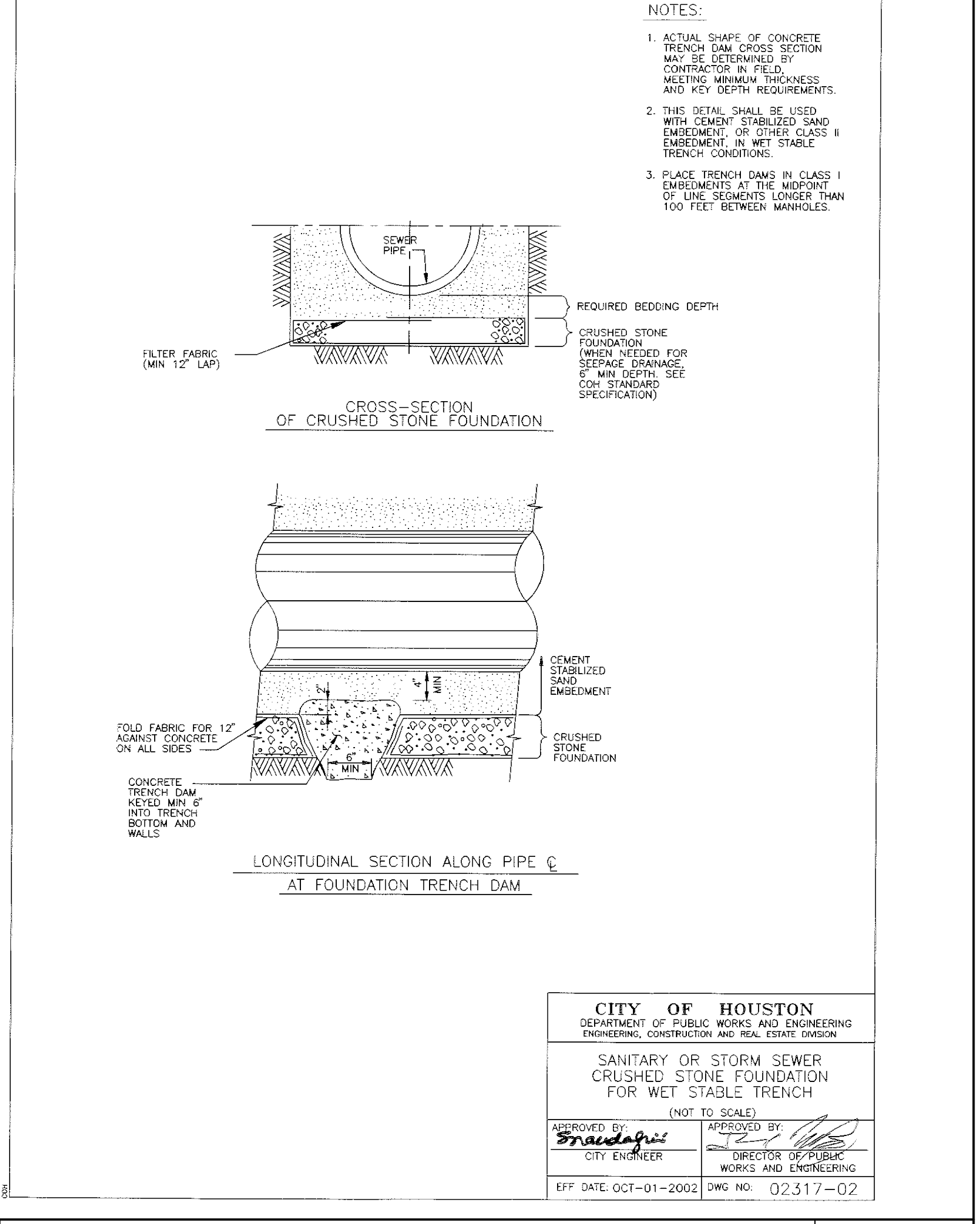
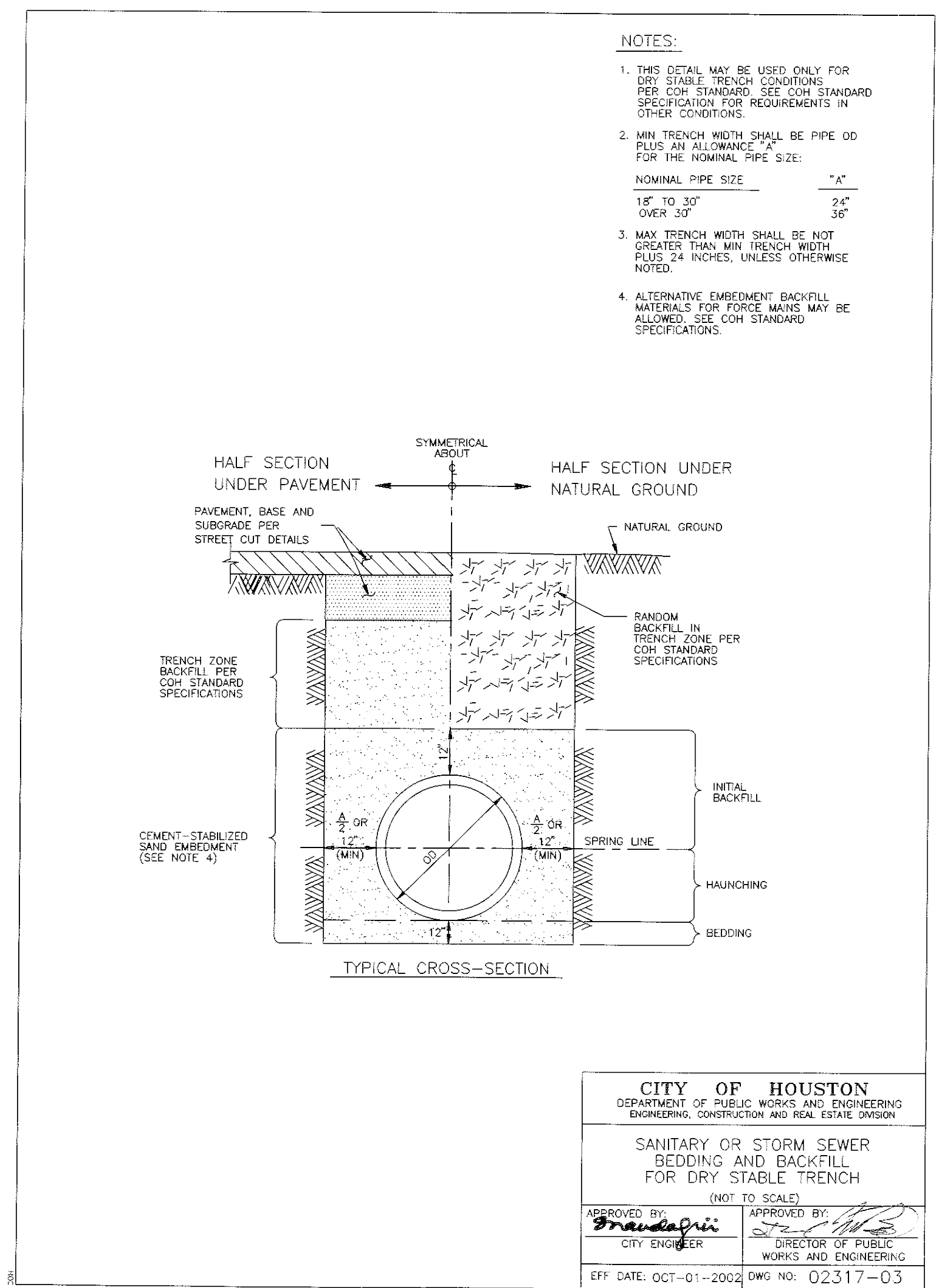
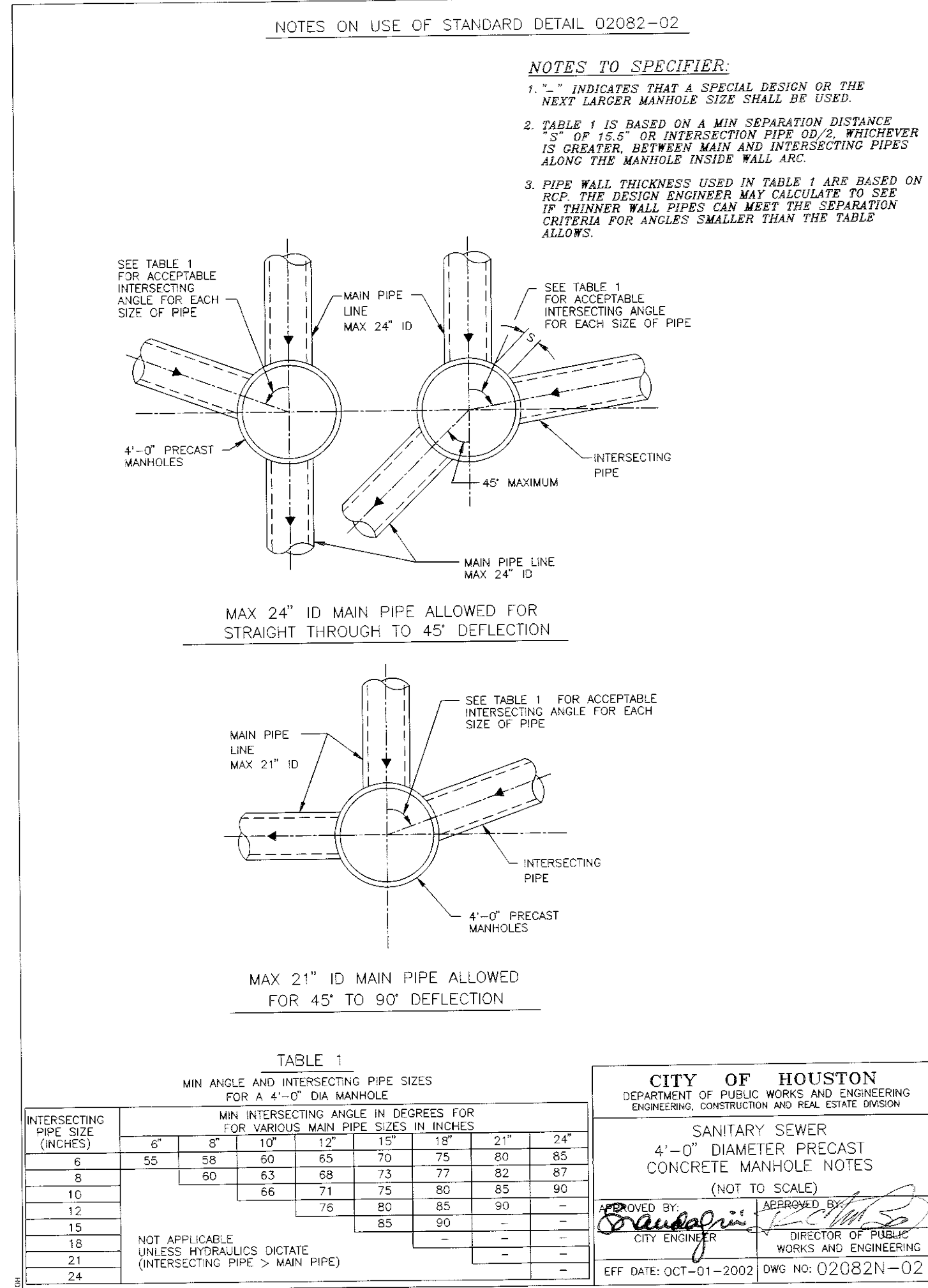


- NOTES:**
- DEPTH OF MANHOLE DETERMINES SECTIONS REQUIRED.
  - PRECAST CONCRETE RINGS SHALL BE PROVIDED WITH ADJUSTMENT RINGS TO BE CALLED FOR IN PLAN AND PROFILE DRAWING.
  - SEAL MANHOLE FRAME IN SEALANT PER COH STANDARD SPECIFICATION.
  - ECCENTRIC PRECAST CONCRETE MANHOLE MAY BE USED.
  - JOINT CEMENT MORTAR WHEN MANHOLE IS LOCATED IN PAVED AREAS.
  - MIN REINFORCING IN THE PRECAST CONCRETE BASE SHALL BE # 3 @ 4" DIA.



**CITY OF HOUSTON**  
DEPARTMENT OF PUBLIC WORKS AND ENGINEERING  
SANITARY SEWER  
4" DIAMETER PRECAST CONCRETE MANHOLE  
(NOT TO SCALE)  
APPROVED BY: [Signature]  
CITY ENGINEER  
APPROVED BY: [Signature]  
DIRECTOR OF PUBLIC WORKS AND ENGINEERING  
EFF. DATE: JULY-01-2010 DWG NO. 02082-02

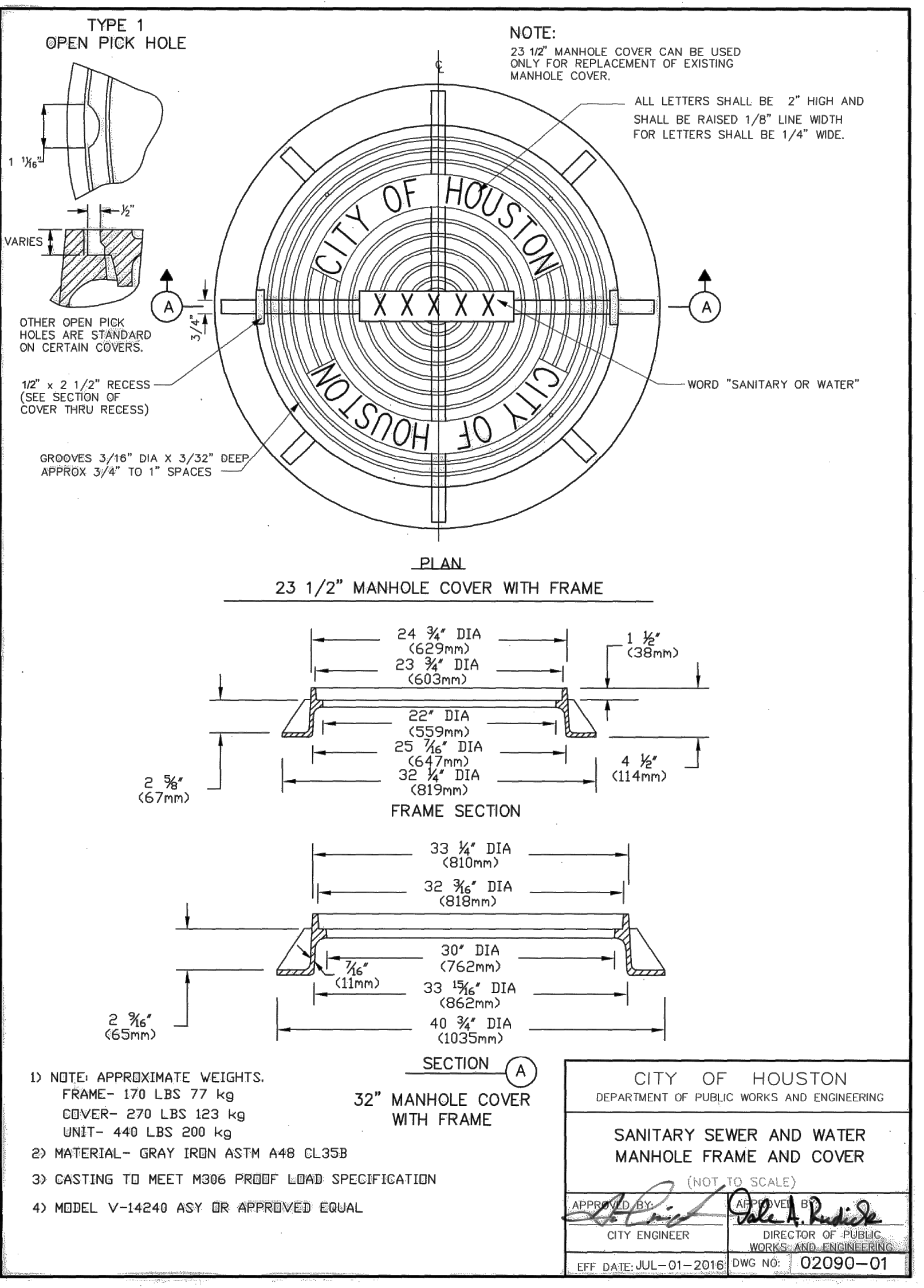


1 MANHOLE DETAIL Scale: N.T.S. File:

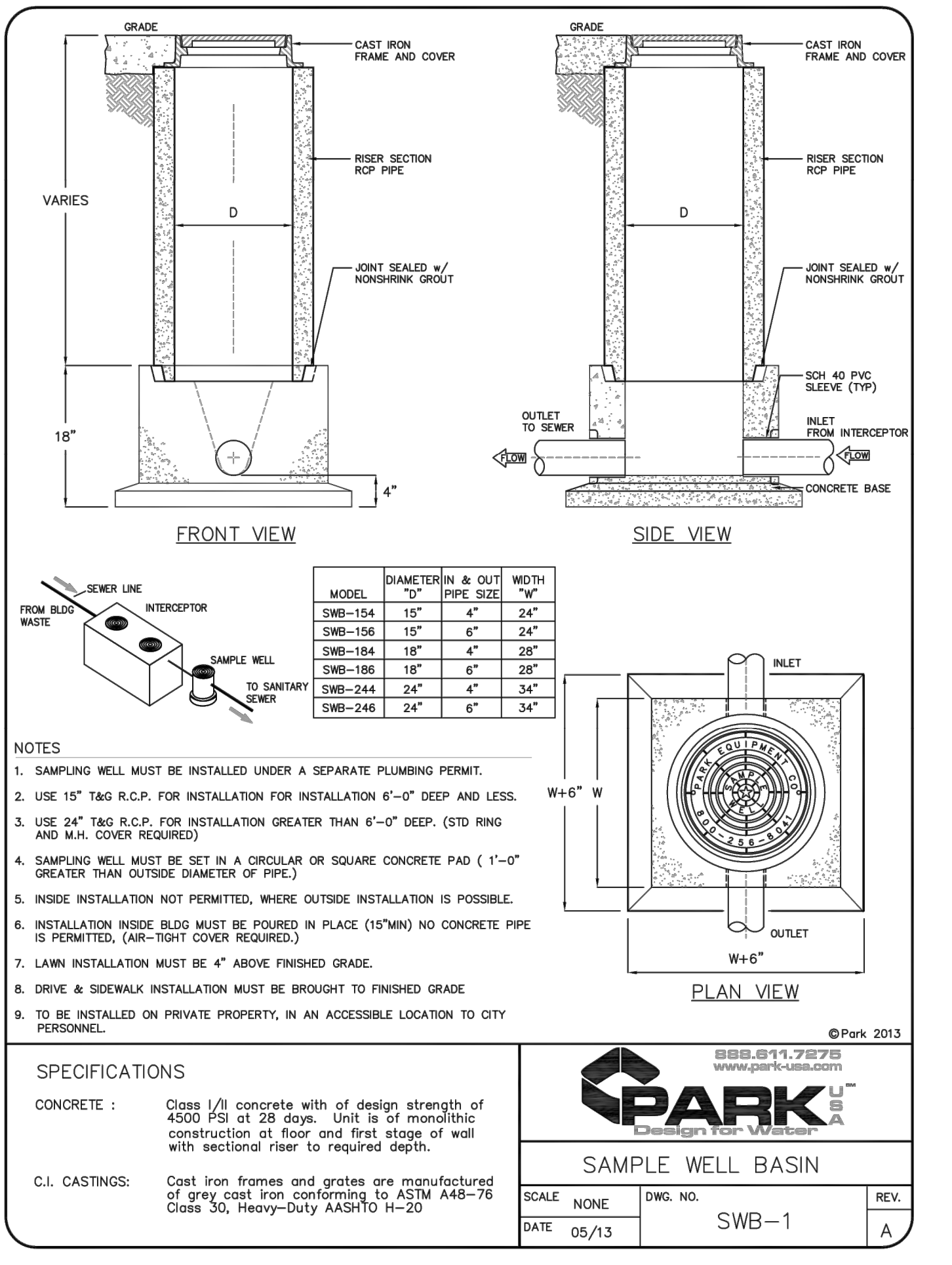
2 SANITARY MANHOLE NOTES Scale: N.T.S. File:

3 BACKFILL DETAIL Scale: N.T.S. File:

4 CRUSHED STONE BEDDING Scale: N.T.S. File:



5 SANITARY SEWER MANHOLE FRAME AND COVER Scale: N.T.S. File:



6 SAMPLE WELL BASIN DETAIL Scale: N.T.S. File:

01/31/2010

PERMIT / BID ISSUE

THIS DOCUMENT IS RELEASED FOR THE PURPOSE OF REVIEW UNDER THE AUTHORITY OF THE CITY OF HOUSTON. IT IS NOT TO BE USED FOR CONSTRUCTION PURPOSES.

**CDA Architects**  
Member American Institute of Architects  
20445 State Hwy 249, Suite 200  
Houston, Texas 77079-9536 Fax 832/978-9240

**IDS Engineering Group**  
13400 NW Freeway  
Houston, TX 77040  
713.662.3179  
1195.301020

**SANITARY SEWER DETAILS**

**Ashton Gray Retail - Kentroc**  
SOUTHWEST CORNER OF SPRING STUEBNER  
AND SPRING PLAZA, HARRIS COUNTY, TEXAS

**C12.0**

SCALE: N.T.S.  
PROJECT:  
DATE: