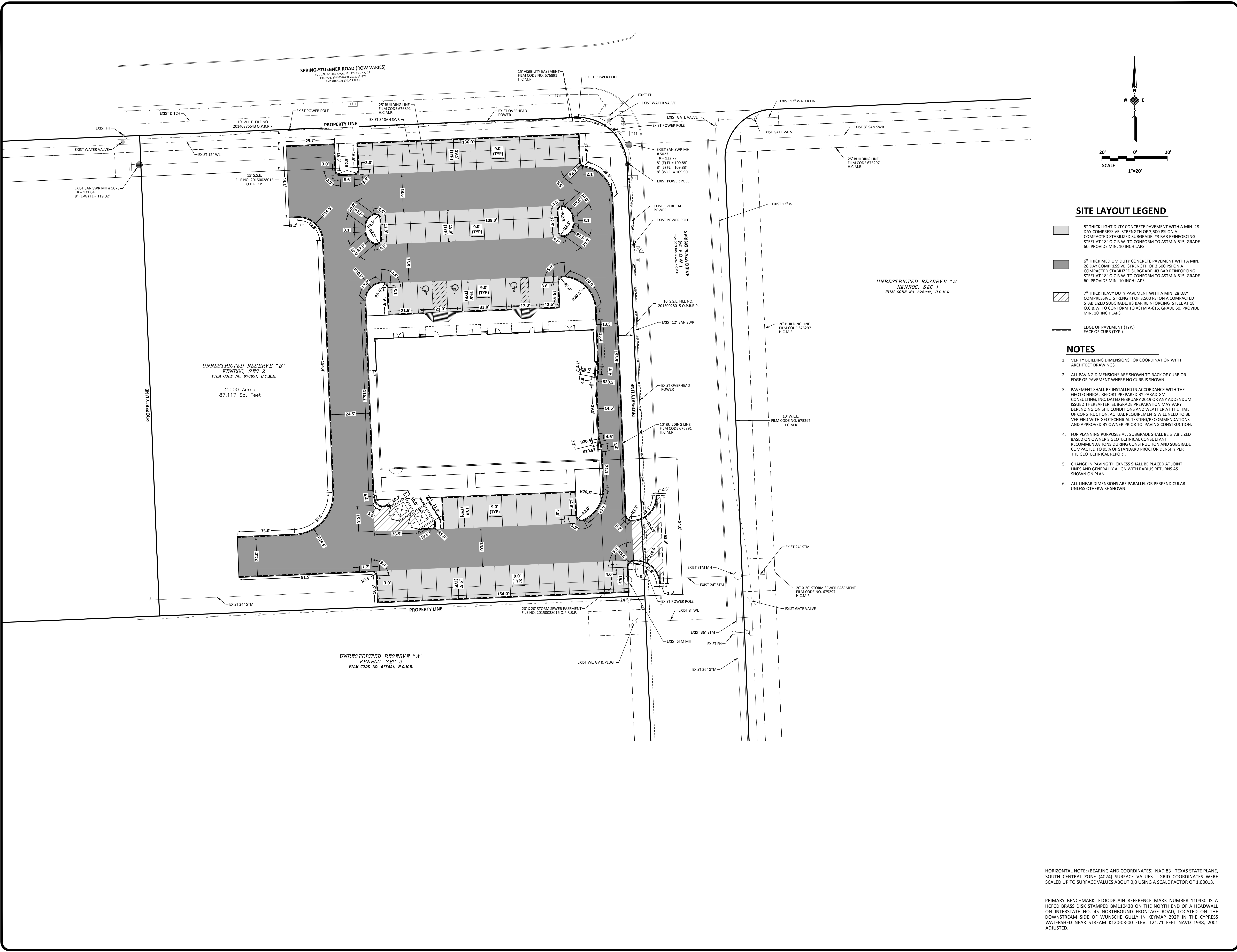



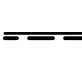



X:\2020\20200202\Ashton Gray Retail - Kenroc\DWG\ASHTON_GRAY_RETAIL_PAVING_PLAN.dwg (3:11) DIMENSION CONTROL AND PAVING PLAN (revised 01.11.2020) 1:24 (1) by jllal (last saved by jllal)



SITE LAYOUT LEGEND

-  5' THICK LIGHT DUTY CONCRETE PAVEMENT WITH A MIN. 28 DAY COMPRESSIVE STRENGTH OF 3,500 PSI ON A COMPACTED STABILIZED SUBGRADE. #3 BAR REINFORCING STEEL AT 18" O.C.B.W. TO CONFORM TO ASTM A-615, GRADE 60. PROVIDE MIN. 10 INCH LAPS.
-  6' THICK MEDIUM DUTY CONCRETE PAVEMENT WITH A MIN. 28 DAY COMPRESSIVE STRENGTH OF 3,500 PSI ON A COMPACTED STABILIZED SUBGRADE. #3 BAR REINFORCING STEEL AT 18" O.C.B.W. TO CONFORM TO ASTM A-615, GRADE 60. PROVIDE MIN. 10 INCH LAPS.
-  7' THICK HEAVY DUTY CONCRETE PAVEMENT WITH A MIN. 28 DAY COMPRESSIVE STRENGTH OF 3,500 PSI ON A COMPACTED STABILIZED SUBGRADE. #3 BAR REINFORCING STEEL AT 18" O.C.B.W. TO CONFORM TO ASTM A-615, GRADE 60. PROVIDE MIN. 10 INCH LAPS.
-  EDGE OF PAVEMENT (TYP.)
-  FACE OF CURB (TYP.)

NOTES

1. VERIFY BUILDING DIMENSIONS FOR COORDINATION WITH ARCHITECT DRAWINGS.
2. ALL PAVING DIMENSIONS ARE SHOWN TO BACK OF CURB OR EDGE OF PAVEMENT WHERE NO CURB IS SHOWN.
3. PAVEMENT SHALL BE INSTALLED IN ACCORDANCE WITH THE GEOTECHNICAL REPORT PREPARED BY PARADIGM CONSULTING, INC. DATED FEBRUARY 2019 OR ANY ADDENDUM ISSUED THEREAFTER. SUBGRADE PREPARATION MAY VARY DEPENDING ON SITE CONDITIONS AND WEATHER AT THE TIME OF CONSTRUCTION. ACTUAL REQUIREMENTS WILL NEED TO BE VERIFIED WITH GEOTECHNICAL TESTING/RECOMMENDATIONS AND APPROVED BY OWNER PRIOR TO PAVING CONSTRUCTION.
4. FOR PAVING PURPOSES ALL SUBGRADE SHALL BE STABILIZED BASED ON OWNER'S GEOTECHNICAL CONSULTANT RECOMMENDATIONS DURING CONSTRUCTION AND SUBGRADE COMPACTED TO 95% OF STANDARD PROCTOR DENSITY PER THE GEOTECHNICAL REPORT.
5. CHANGE IN PAVING THICKNESS SHALL BE PLACED AT JOINT LINES AND GENERALLY ALIGN WITH RADIUS RETURNS AS SHOWN ON PLAN.
6. ALL LINEAR DIMENSIONS ARE PARALLEL OR PERPENDICULAR UNLESS OTHERWISE SHOWN.

HORIZONTAL NOTE: (BEARING AND COORDINATES) NAD 83 - TEXAS STATE PLANE, SOUTH CENTRAL ZONE (4024) SURFACE VALUES - GRID COORDINATES WERE SCALED UP TO SURFACE VALUES ABOUT 0.0 USING A SCALE FACTOR OF 1.00013.

PRIMARY BENCHMARK: FLOODPLAIN REFERENCE MARK NUMBER 110430 IS A HPCD BRASS DISK STAMPED BM110430 ON THE NORTH END OF A HEADWALL ON INTERSTATE NO. 45 NORTHBOUND FRONTAGE ROAD, LOCATED ON THE DOWNSTREAM SIDE OF WUNSCH GULLY IN KEYMAP 292P IN THE CYPRESS WATERSHED NEAR STREAM K120-03-00 ELEV. 121.71 FEET NAVD 1988, 2001 ADJUSTED.

01/31/2020

PERMIT / BID ISSUE

THIS DOCUMENT IS RELEASED FOR THE PURPOSE OF REVIEW UNDER THE AUTHORITY OF THE ENGINEER. IT IS NOT TO BE USED FOR CONSTRUCTION PURPOSES.

CDA Architects
Member American Institute of Architects
200445 State Hwy 249, Suite 200
Houston, Texas 77079
832/978-9532 Fax 832/978-9240

IDS Engineering Group
13400 NW Freeway
Houston, TX 77040
713.462.3378
11953.010100

DIMENSION CONTROL AND PAVING PLAN

Ashton Gray Retail - Kenroc
SOUTHWEST CORNER OF SPRING STUEBNER AND SPRING PLAZA, HARRIS COUNTY, TEXAS

SCALE: 1" = 20'

PROJECT: C3.0

DATE: