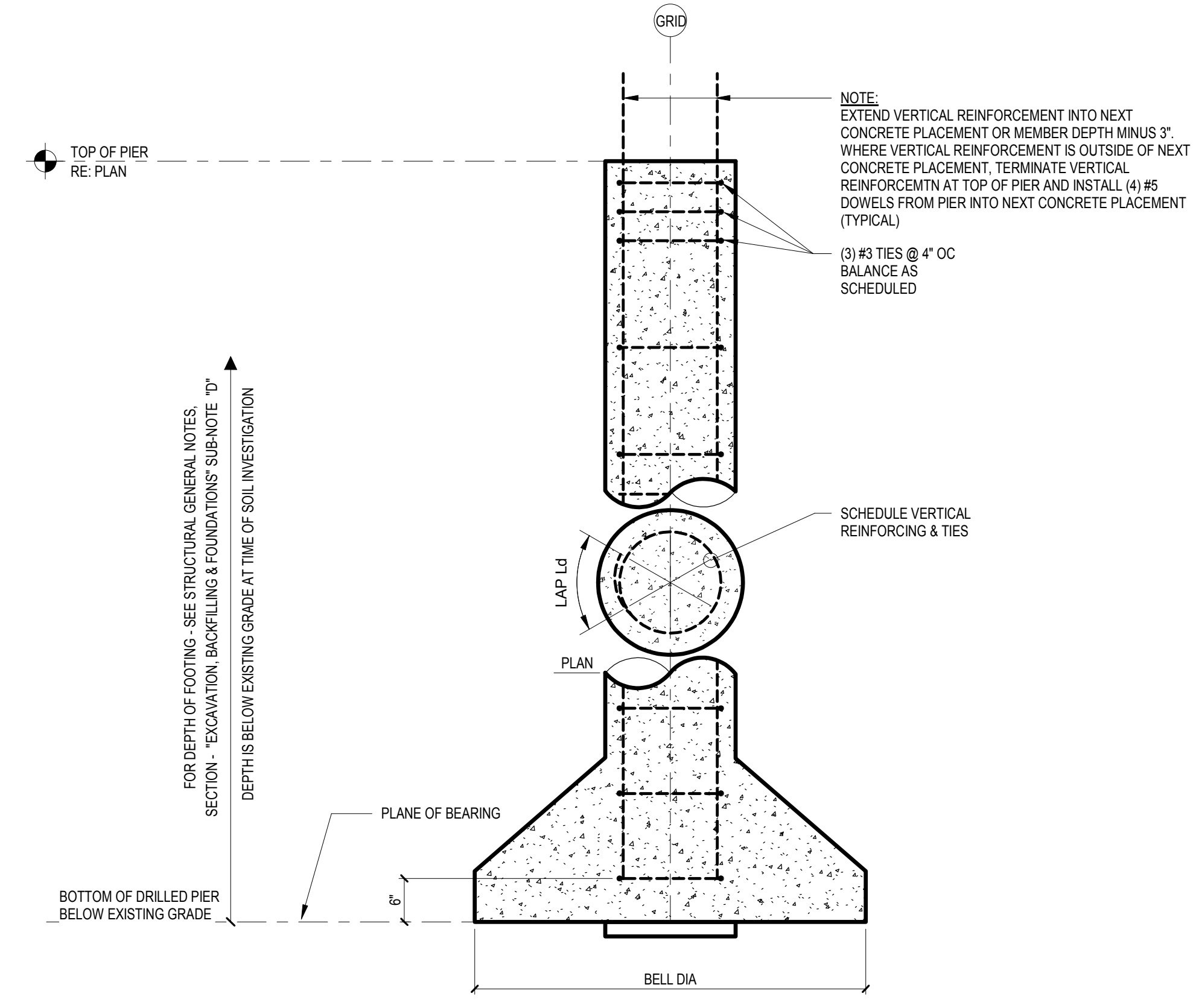


1A. DRILLED PIER DETAILS



1. DRILLED PIER SCHEDULE

SHAFT DIAMETER	VERTICAL REINFORCING		TIES		REMARKS
	NUMBER	SIZE	SIZE	SPACING	
18"	6	#5	#4	10"	
24"	6	#6	#4	10"	

1B. DRILLED PIER GENERAL NOTES

1. A GEOTECHNICAL REPORT IS AVAILABLE FOR REVIEW IN THE 'EXCAVATION, BACKFILLING & FOUNDATION' SECTION OF THE GENERAL NOTES.
2. THE INDEPENDENT TESTING LABORATORY SHALL CONFIRM THE ALLOWABLE SOIL BEARING CAPACITY IN THE FIELD AT THE ELEVATION DESIGNATED AS THE PLANE OF BEARING FOR THE DRILLED PIER.
3. THE INDEPENDENT TESTING LABORATORY SHALL INSPECT THE BOTTOM AND SIDES OF THE DRILLED PIER PRIOR TO PLACING REINFORCING AND CONCRETE.
4. CENTER ALL DRILLED PIERS UNDER THEIR COLUMNS, U.O.N.
5. MAINTAIN CLOSE AND ACCURATE DRILLING PRACTICES TO ACHIEVE CLOSE TOLERANCES WITH THE REINFORCING STEEL AND THE ANCHOR ROD TEMPLATE.
6. ALL REINFORCING STEEL FOR DRILLED PIERS SHALL BE DEFORMED NEW BILLET STEEL CONFORMING TO ASTM A615, GRADE 60.
7. ALL SCHEDULED REINFORCEMENT SHALL BE UNIFORMLY DISTRIBUTED.
8. DEPOSIT CONCRETE TO ITS FINAL POSITION BY THE USE OF A TREMIE.
9. CONSOLIDATE CONCRETE IN ITS FINAL POSITION BY VIBRATING.



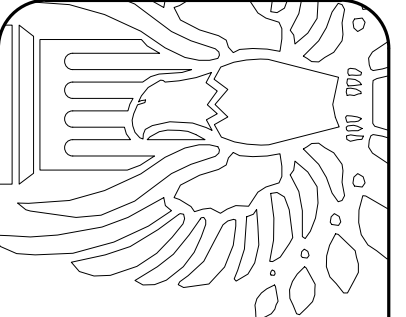
9600 Richmond Avenue, Suite 400
Houston, Texas 77042
713.337.8881
Texas Registered Engineering Firm
F-003408
PROJECT: 19-013-00

DRILLED PIER SCHEDULE

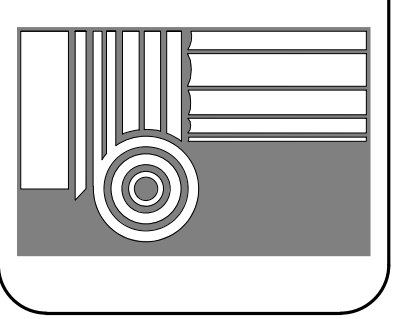
10,720 SF Retail Shell
SPRING STUEBNER @ SPRING PLAZA
SPRING, TEXAS 77389

SCALE AS NOTED
PROJECT: 19-013-00
DATE: 02/13/19

S301



CDA Architects
Member American Institute of Architects
200445 State Hwy 7249, Suite 200
Houston, Texas 77079
832/978-9232 Fax 832/678-9240



DRILLED PIER SCHEDULE

10,720 SF Retail Shell
SPRING STUEBNER @ SPRING PLAZA
SPRING, TEXAS 77389

S301