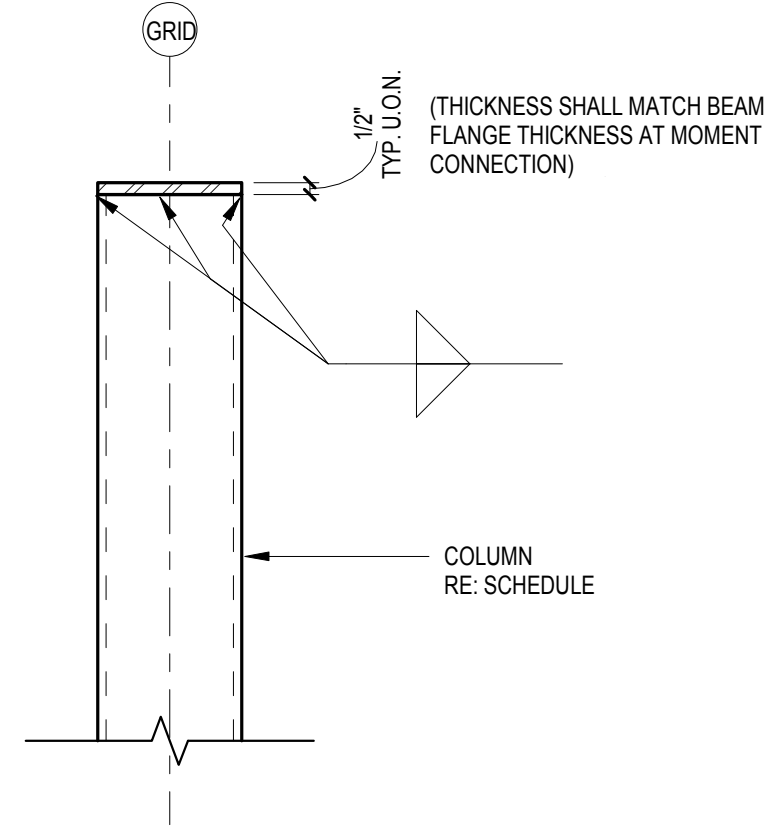


A. CAP PLATE DETAIL
(NO SCALE)

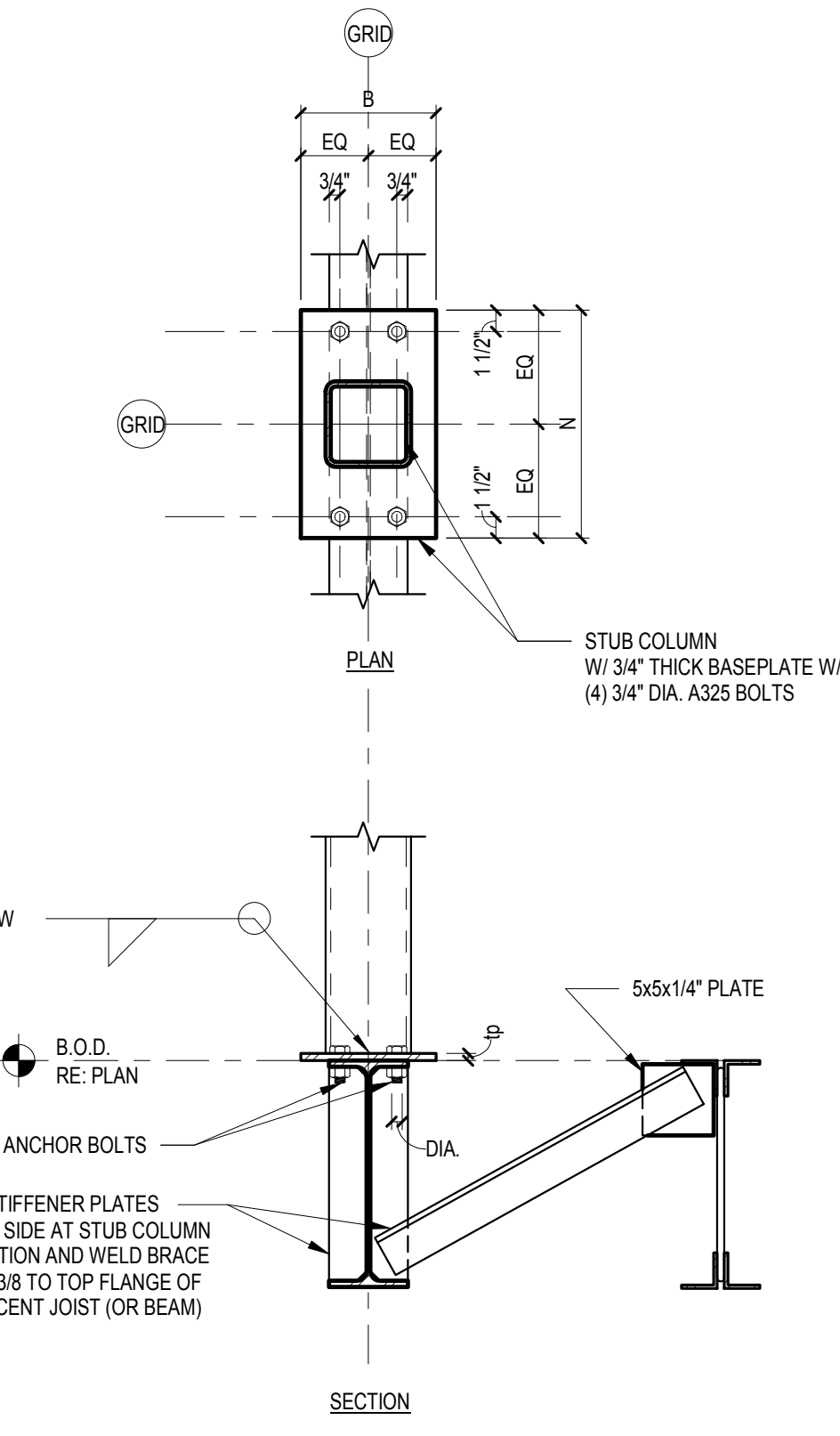


B. COLUMN GENERAL NOTES

1. PROVIDE STRUCTURAL STEEL FOR W SHAPES CONFORMING TO ASTM 992, GRADE 50.
2. PROVIDE STRUCTURAL STEEL FOR HSS COLUMNS CONFORMING TO ASTM A500, GRADE B.
3. PROVIDE STEEL FOR STIFFENER PLATES, CONNECTION PLATES AND ANGLES CONFORMING TO ASTM A36.
4. SAW OR MILL SURFACES NOTED FIN. (FINISHED) FOR TRUE AND FULL CONTACT.
5. USE E70XX WELDING ELECTRODES FOR ALL WELDS, UNLESS OTHERWISE NOTED.
6. WEB DOUBLER PLATES ARE NOT REQUIRED.

C. COLUMN REMARKS

D. STUB COLUMN BASE PLATE DETAIL
(NO SCALE)



E. BASE PLATE GENERAL NOTES

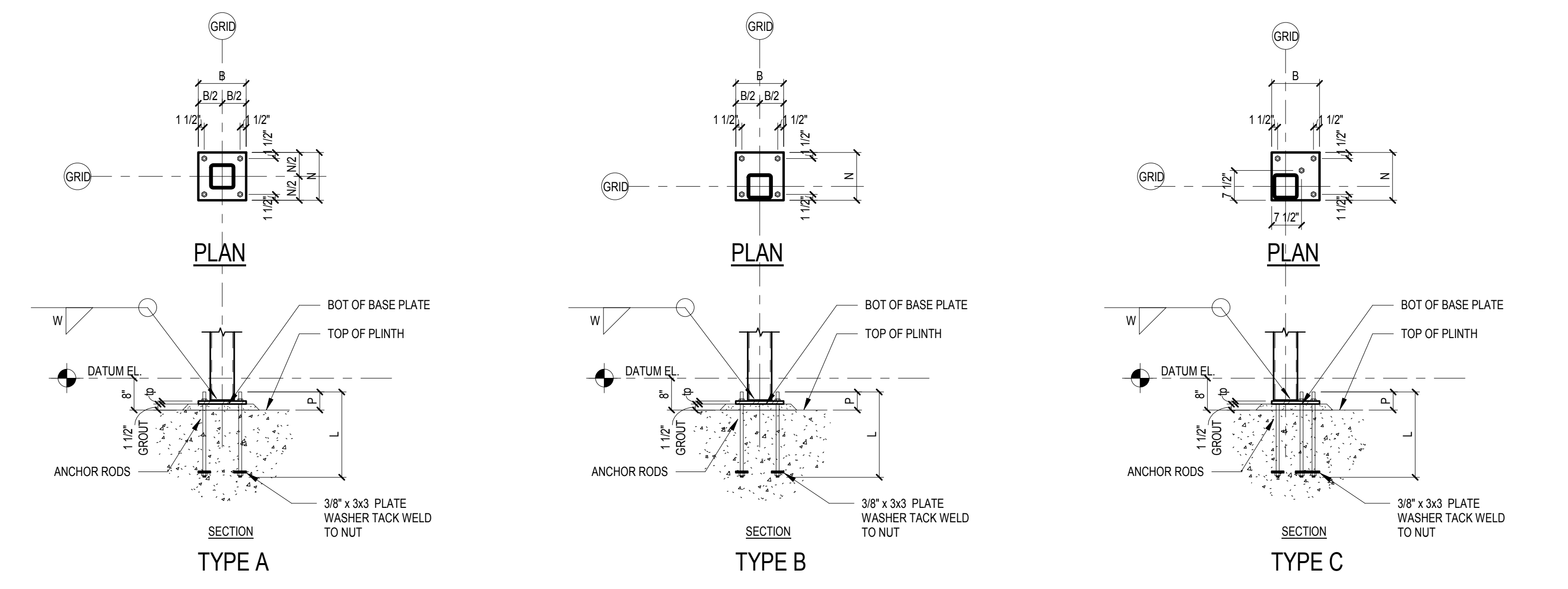
1. PROVIDE STEEL FOR BASE PLATES CONFORMING TO ASTM A36.
2. PROVIDE HOLES IN BASE PLATES IN ACCORDANCE WITH AISC 14TH EDITION.
3. PROVIDE ANCHOR RODS CONFORMING TO ASTM F1554, GRADE 55 WELDABLE.
4. PROVIDE ANCHOR RODS WITH PLATE WASHERS AND HEX NUTS.
5. USE E70XX WELDING ELECTRODES FOR ALL WELDS, UNLESS OTHERWISE NOTED.
6. MILL SURFACES NOTED FIN. (FINISHED) FOR TRUE AND FULL CONTACT.
7. SET ANCHOR RODS WITH TEMPLATE.
8. PROVIDE NON-METALLIC SHRINK-RESISTANT GROUT WITH 8000 PSI MINIMUM COMPRESSIVE STRENGTH AT 28-DAYS.

1. STRUCTURAL STEEL COLUMN SCHEDULE AND DETAILS

LEVEL	COLUMN MARK	C1	C2	C3														
CAP PLATE DETAIL		A/S302	A/S302	A/S302														
TOP OF STEEL SEE PLAN																		
ROOF LEVEL BOO = SEE PLAN																		
F.F.E. = 0.0'																		
BOTTOM OF BASE PLATE EL.		- 6 1/2'	- 6 1/2'	- 6 1/2'														
BASE PLATE MARK		BP1	BP2	BP3														
REMARKS																		

2. BASE PLATE SCHEDULE AND DETAILS

PLATE MARK	TYPE	DIMENSIONS			NUMBER	ANCHOR RODS			WELD SIZE	REMARKS
		B (IN)	N (IN)	Ø (IN)		DIA. (IN)	PROJECTION P (IN)	LENGTH L (IN)		
BP1	A	14	14	1 1/4"	4	1"	6	2'-0"	5/16	
BP2	B	14	14	1 1/4"	4	1"	6	2'-0"	5/16	
BP3	C	14	14	1 1/4"	4	1"	6	2'-0"	5/16	



02/13/2019

PREPARE / BID ISSUE

DATE 02/19

CDA Architects
Member American Institute of Architects
200445 State Hwy 249, Suite 200
Houston, Texas 77079
832/978-9232 Fax 832/978-9240

ASHTON GRAY
DEVELOPMENT

COLUMN SCHEDULE AND DETAILS

10,720 SF Retail Shell
SPRING STUEBNER @ SPRING PLAZA
SPRING, TEXAS 77389

S302

SCALE AS NOTED
PROJECT 19-017
DATE 02/13/19

Dally
ASSOCIATES
ARCHITECTURAL & CIVIL
9600 Richmond Avenue, Suite 400
Houston, Texas 77042
713.337.8881
Texas Registered Engineering Firm
F-033408
PROJECT: 19-013-00