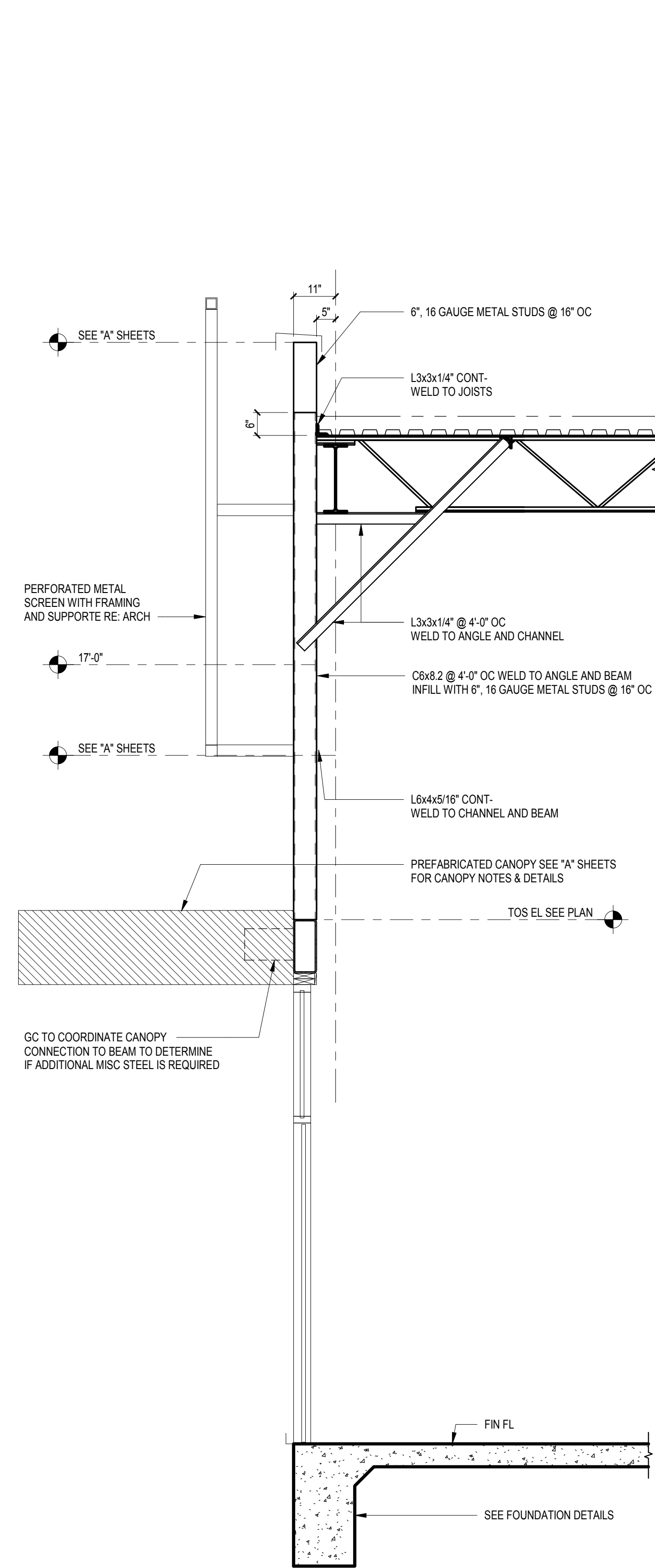
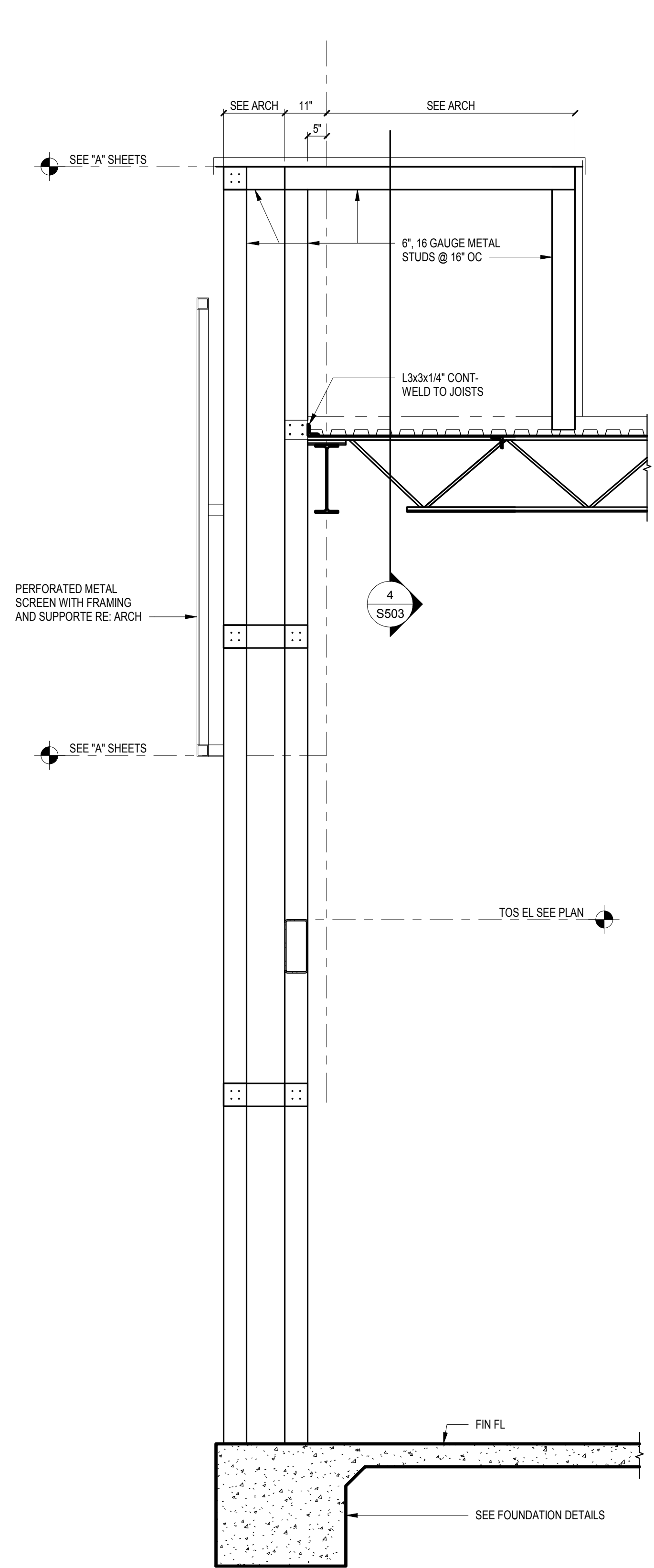


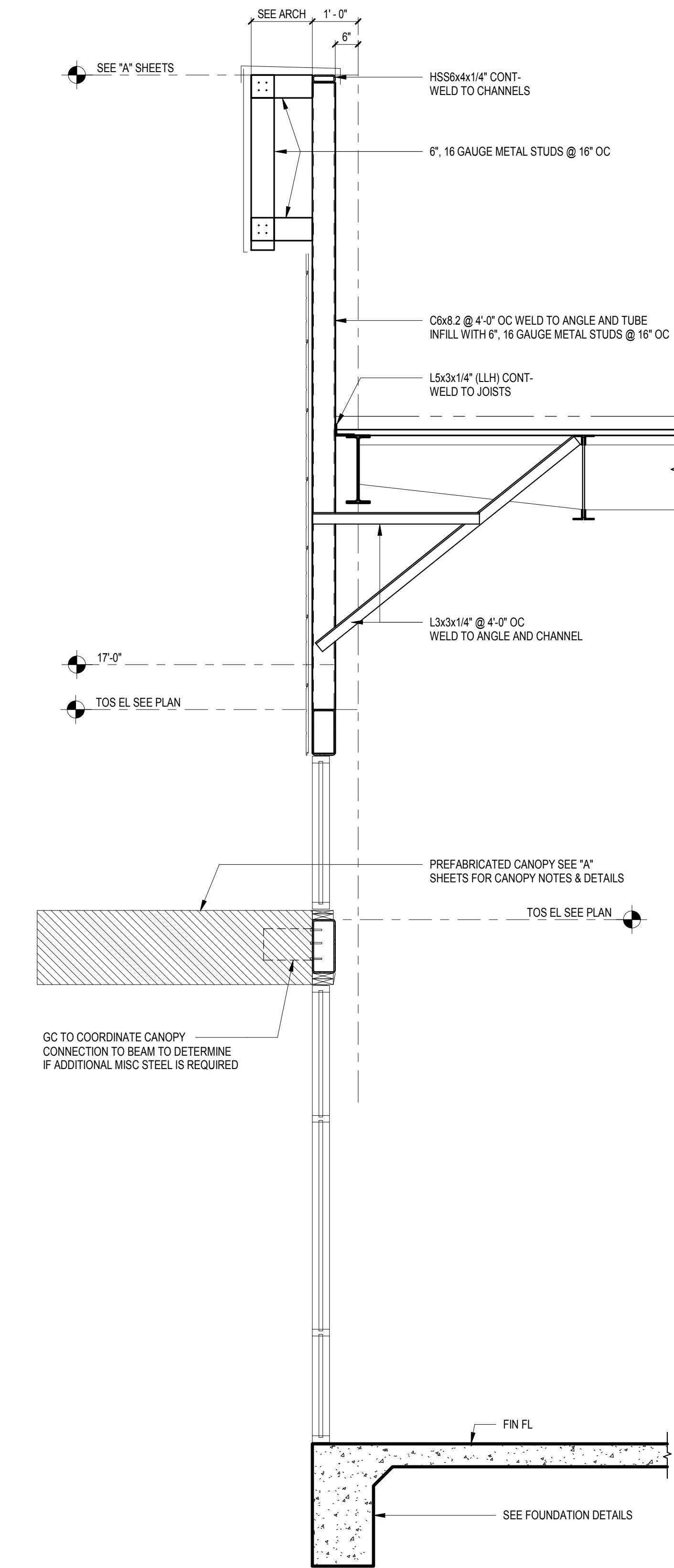
1 SECTION
1/2" = 1'-0"



2 SECTION
1/2" = 1'-0"



3 SECTION
1/2" = 1'-0"



4 SECTION
1/2" = 1'-0"

DATE: 02/13/19	PREPARED BY: BID ISSUE
<p>CDA Architects Member American Institute of Architects 200445 State Hwy 249, Suite 200 Houston, Texas 77078 832/978-9232 Fax 832/978-9240</p>	
<p>FULL HEIGHT FRAMING SECTIONS 10,720 SF Retail Shell SPRING STUEBNER @ SPRING PLAZA SPRING, TEXAS 77389</p>	
<p>SCALE AS NOTED PROJECT: 19-013-00 DATE: 02/13/19</p>	<p>S502</p>