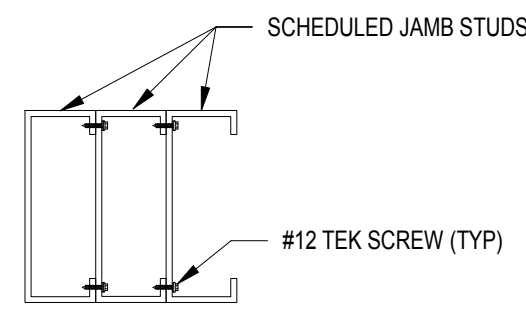
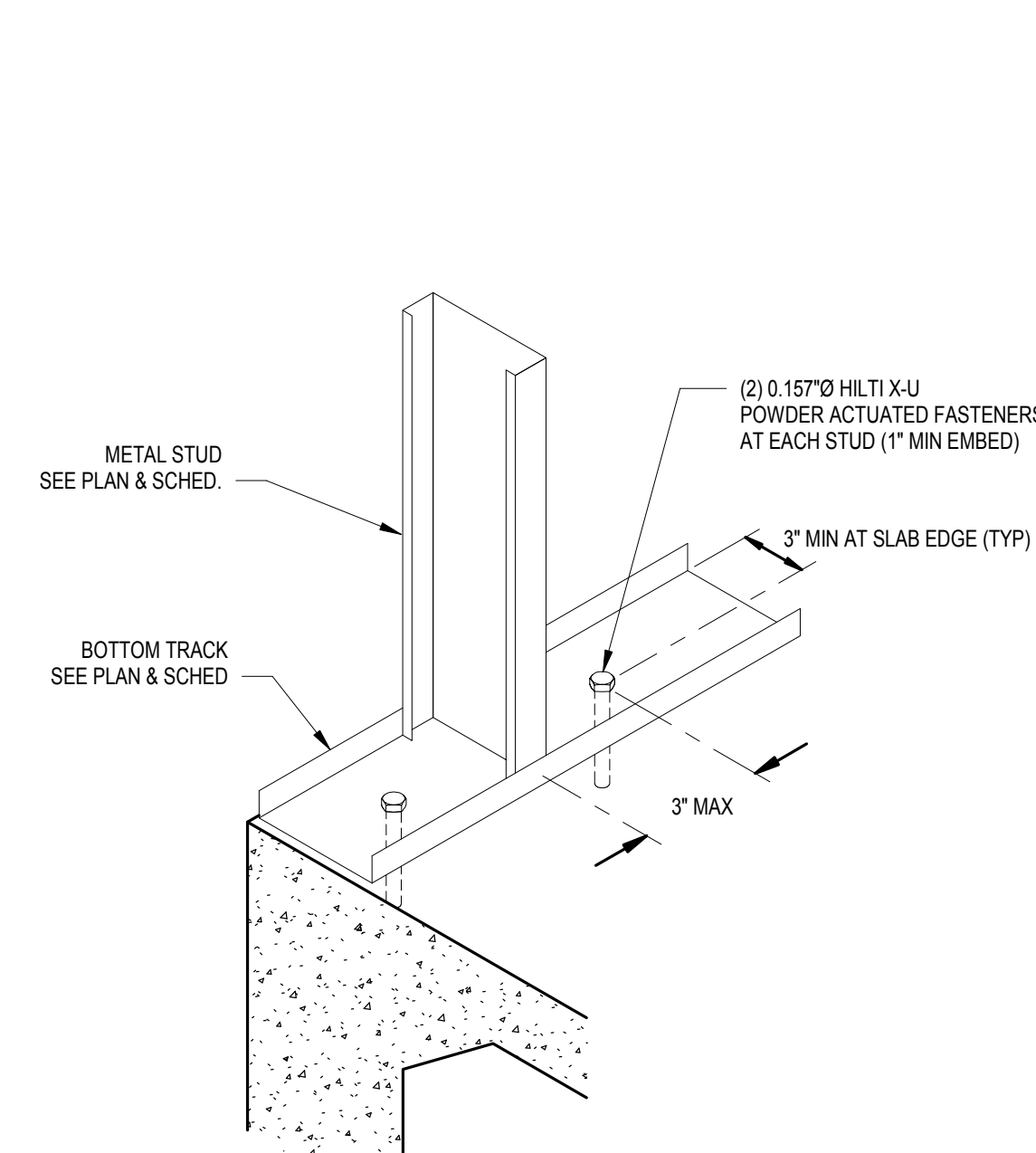


JAMB STUD SCHEDULE					
OPENING SIZE	NO. OF JAMB STUDS	NO. OF JACK STUDS	HEADER DETAIL	SILL SIZE	SILL ATTACHMENT
< 4'-6"	2	1	10S601	600T125-54	AL600 CLIP W/ (4) #12 TEK SCREWS INTO JAMB & (4) #12 TEK SCREWS INTO SILL
4'-6" <= 10'-0"	4	1	10S601	600T125-54	AL600 CLIP W/ (4) #12 TEK SCREWS INTO JAMB & (4) #12 TEK SCREWS INTO SILL

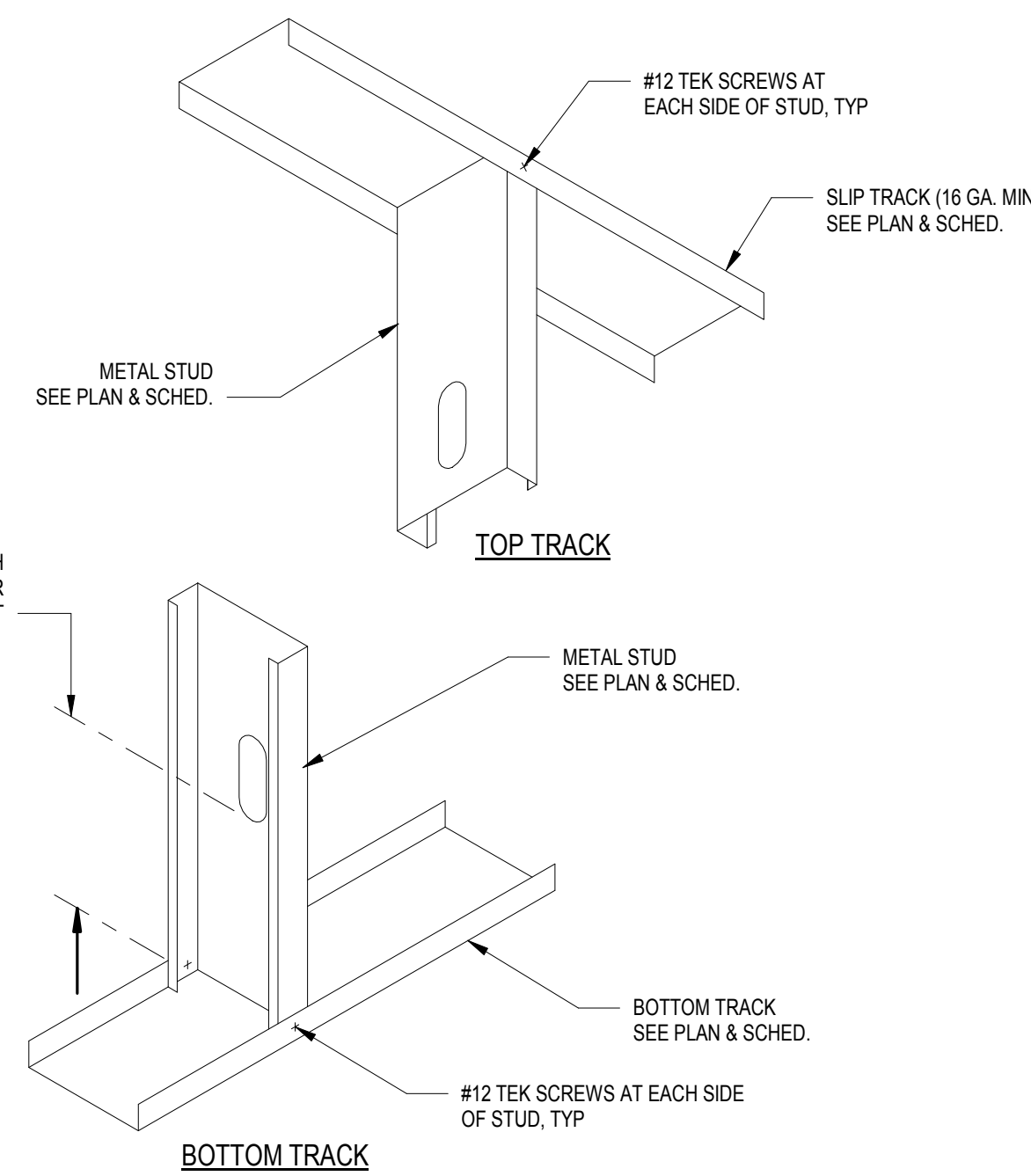


NOTES:  
1. ATTACH MULTIPLE METAL STUDS TOGETHER W/ (2) #12 TEK SCREWS @ 12" O.C.

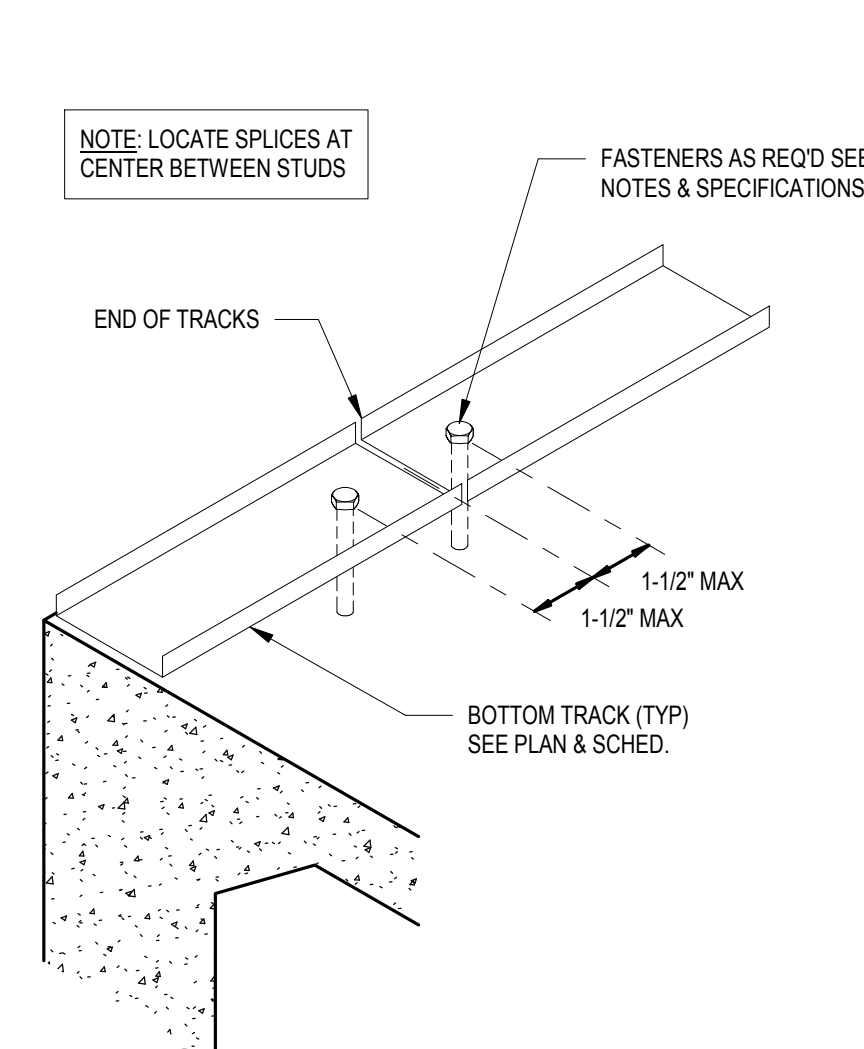
1 MULTIPLE METAL STUD DETAIL  
1" = 1'-0"



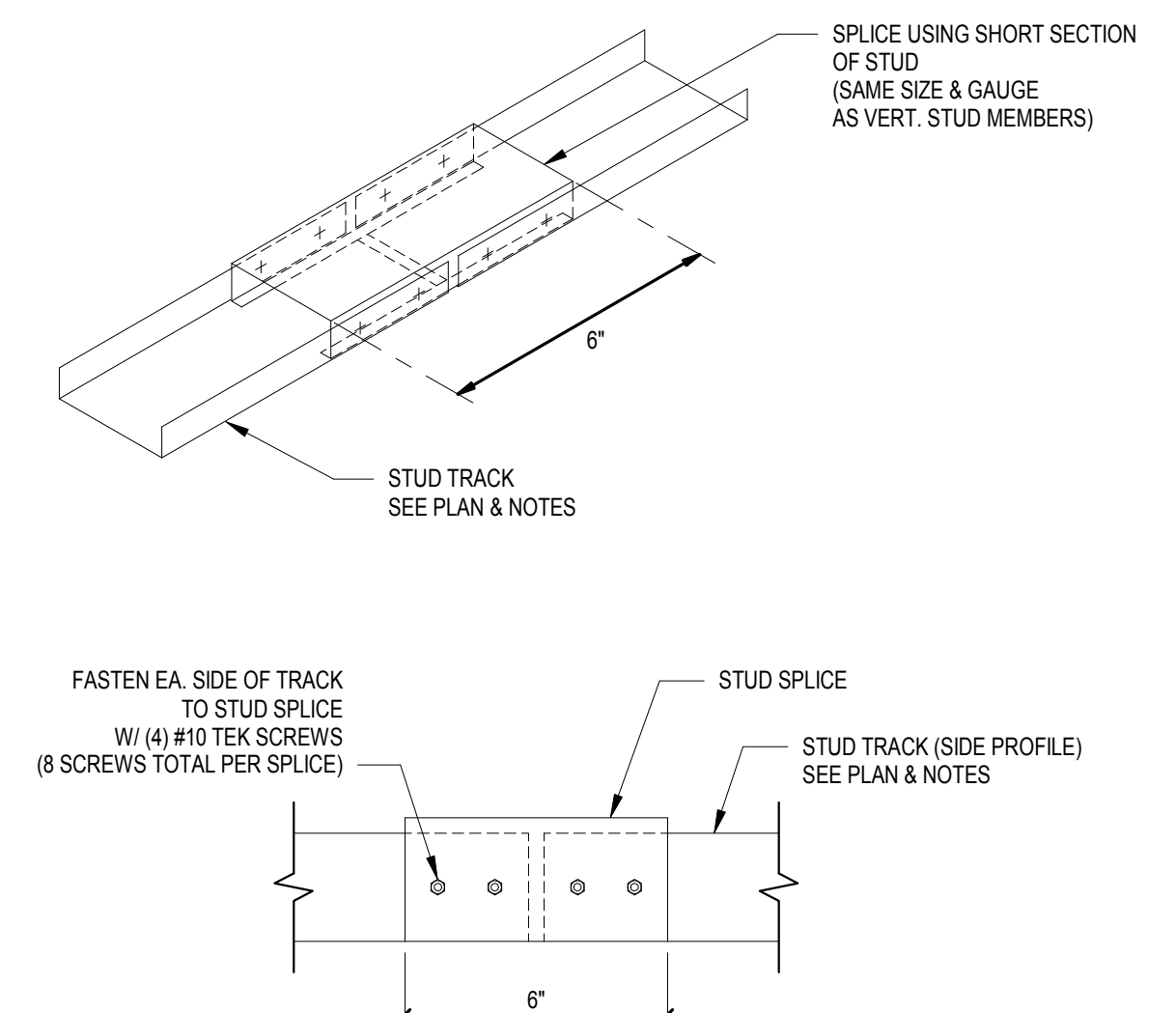
2 TYPICAL DETAIL - BOTTOM RUNNER TRACK CONNECTION  
1" = 1'-0"



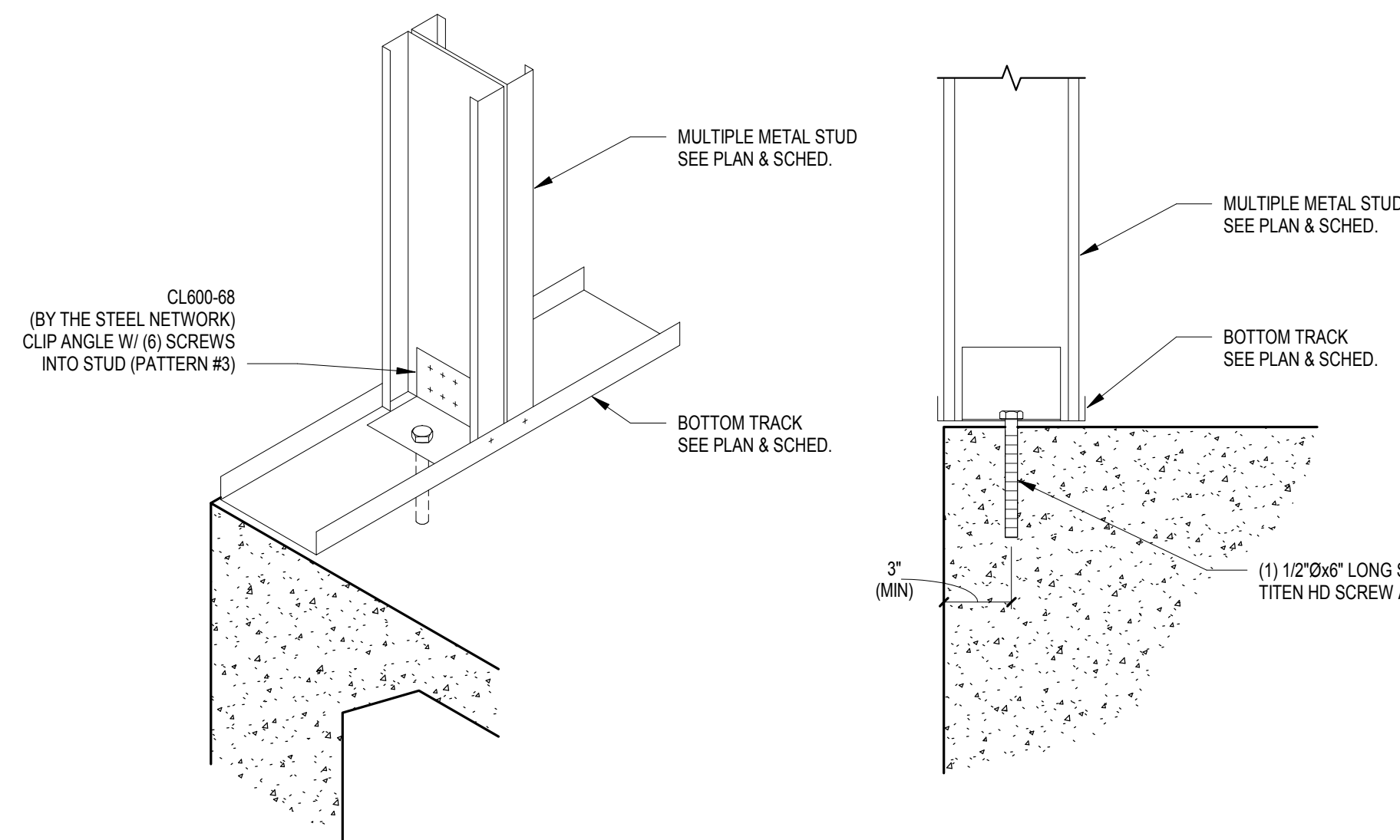
3 TYPICAL DETAIL - STUD TO TRACK CONNECTION  
1" = 1'-0"



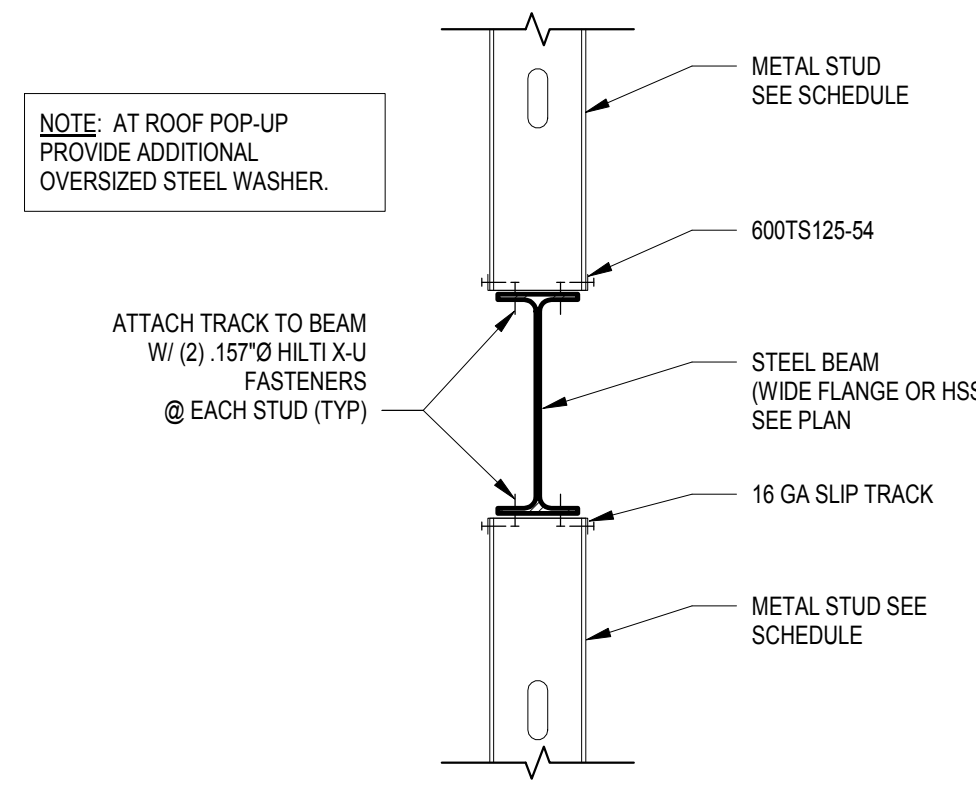
4 TYPICAL DETAIL - BOTTOM TRACK SPLICE  
1" = 1'-0"



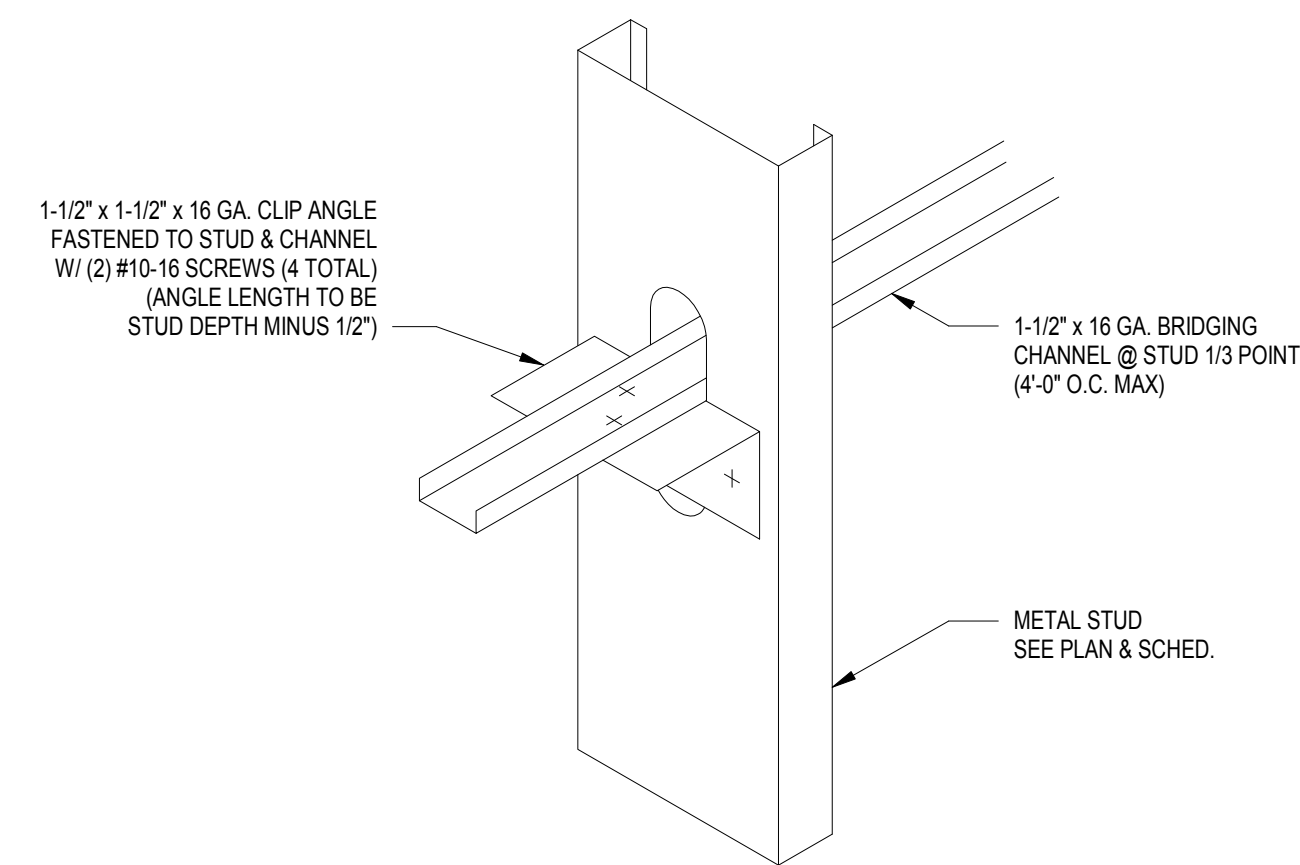
5 TYPICAL TOP TRACK SPLICE  
1" = 1'-0"



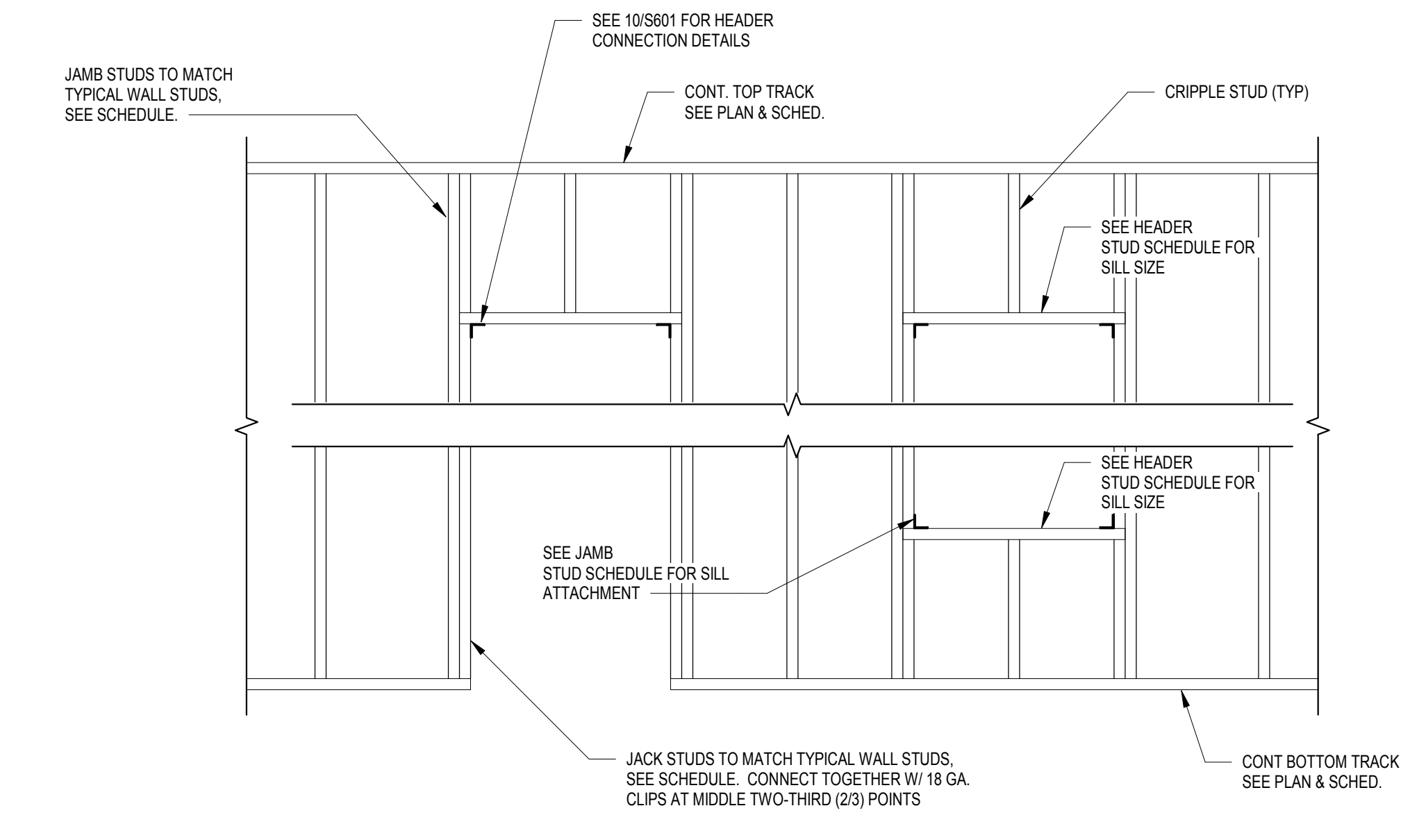
6 TYPICAL DETAIL - STUD HOLDDOWN CONNECTION TO FOUNDATION AT JAMB  
1" = 1'-0"



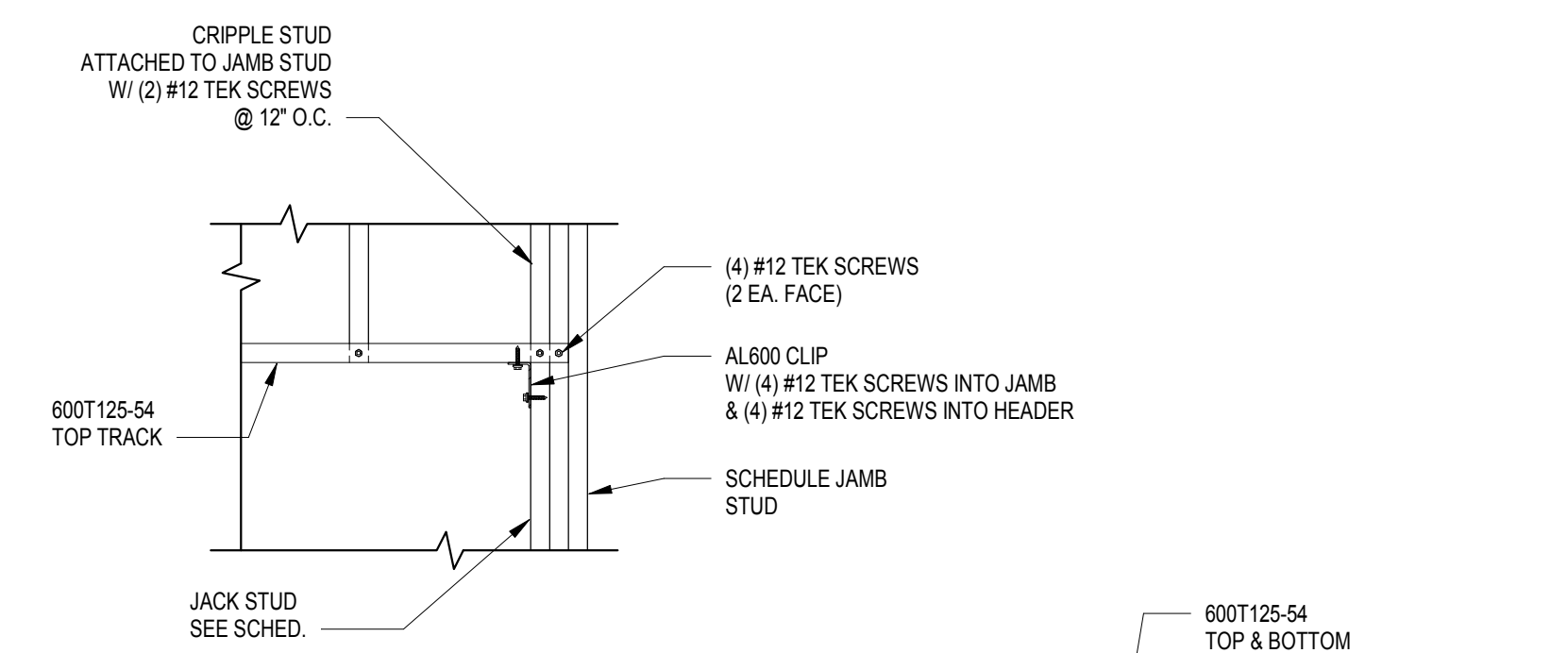
7 TYPICAL DETAIL - TYPICAL CONNECTION TO STRUCTURE  
1" = 1'-0"



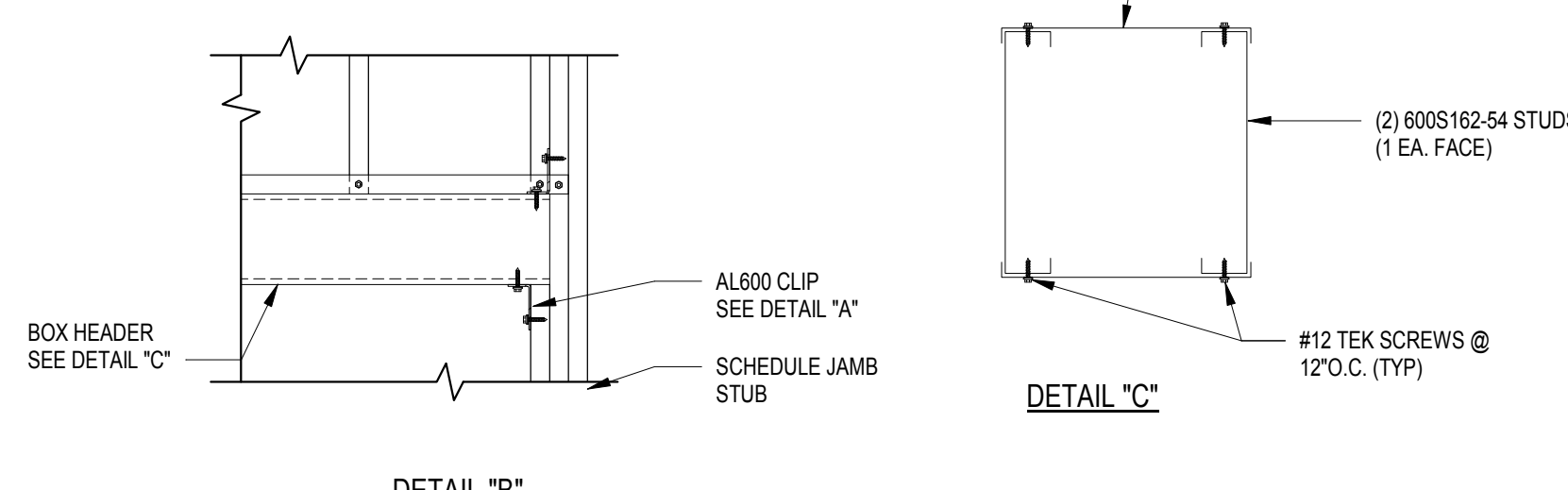
8 U-CHANNEL BRIDGING DETAIL  
1" = 1'-0"



9 TYPICAL FRAMING AT OPENINGS  
1" = 1'-0"

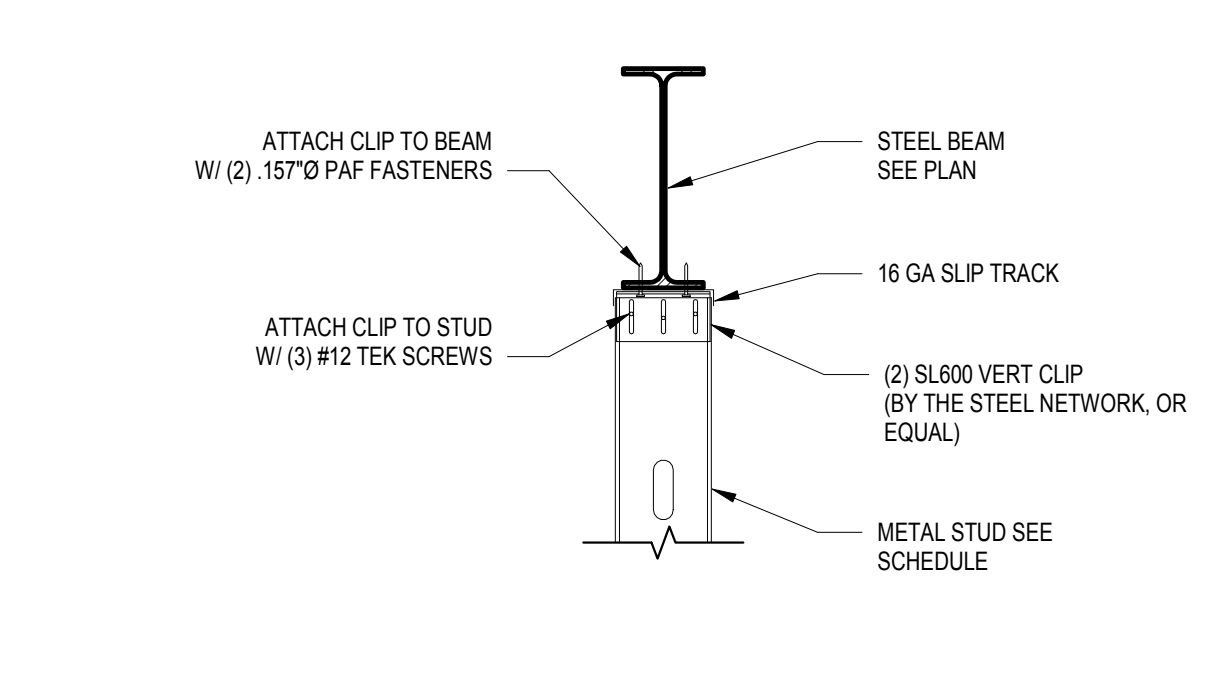


DETAIL "A"

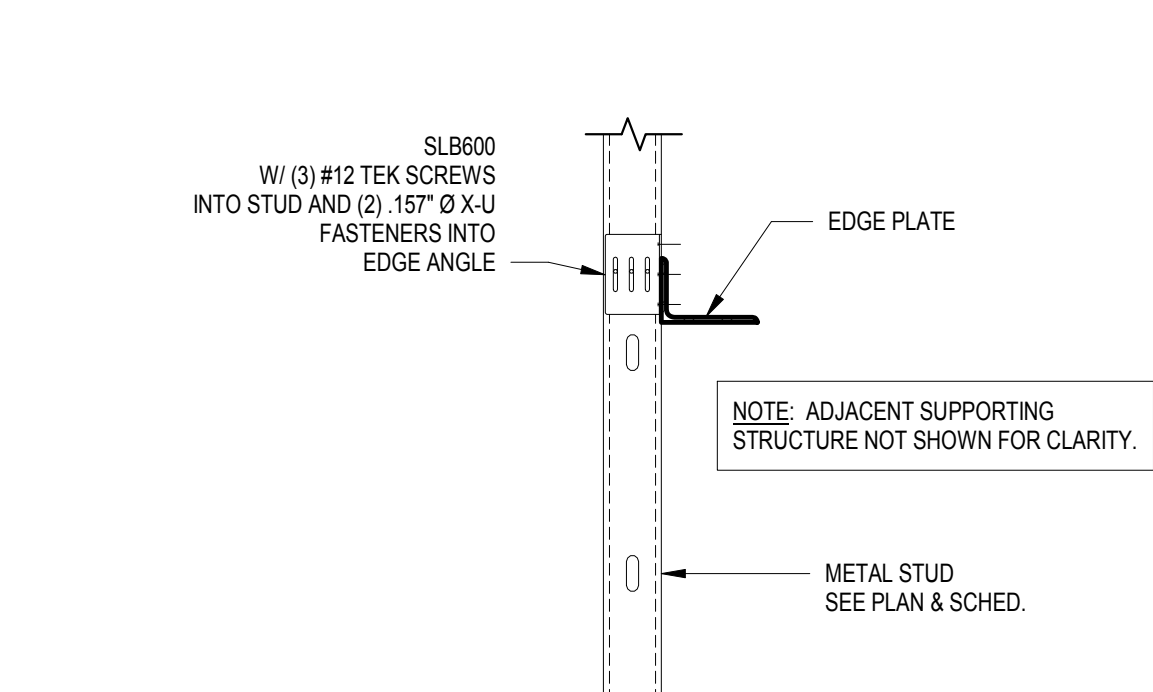


DETAIL "B"

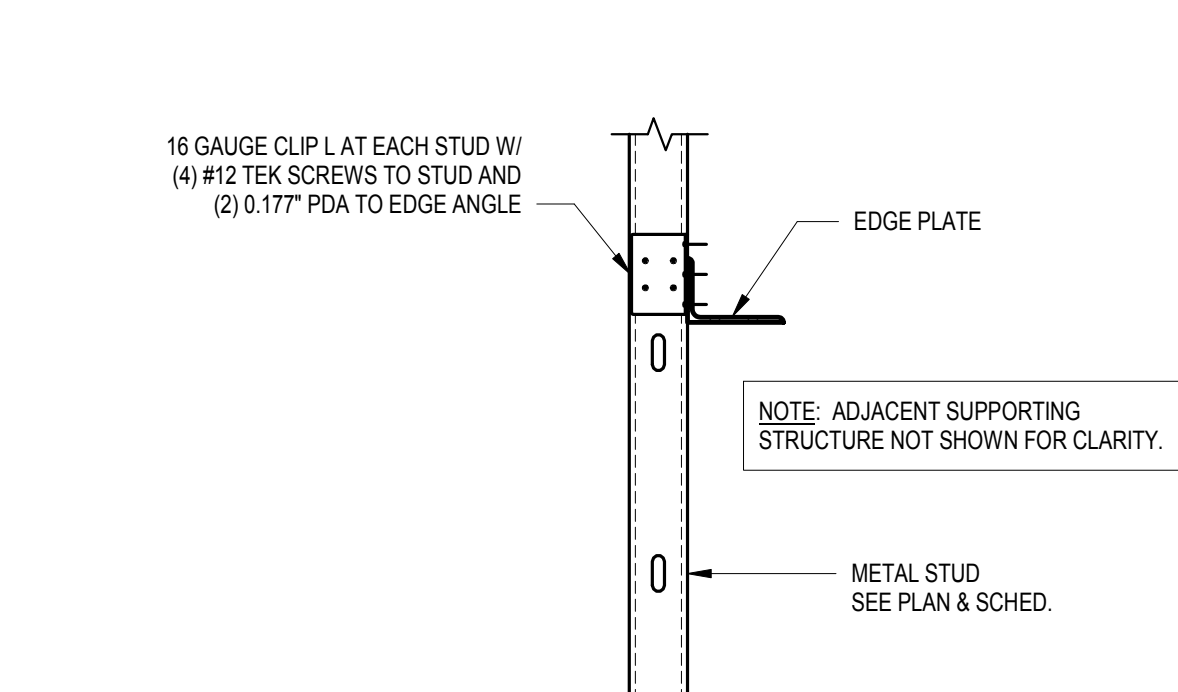
10 TYPICAL FRAMING AT OPENINGS  
1" = 1'-0"



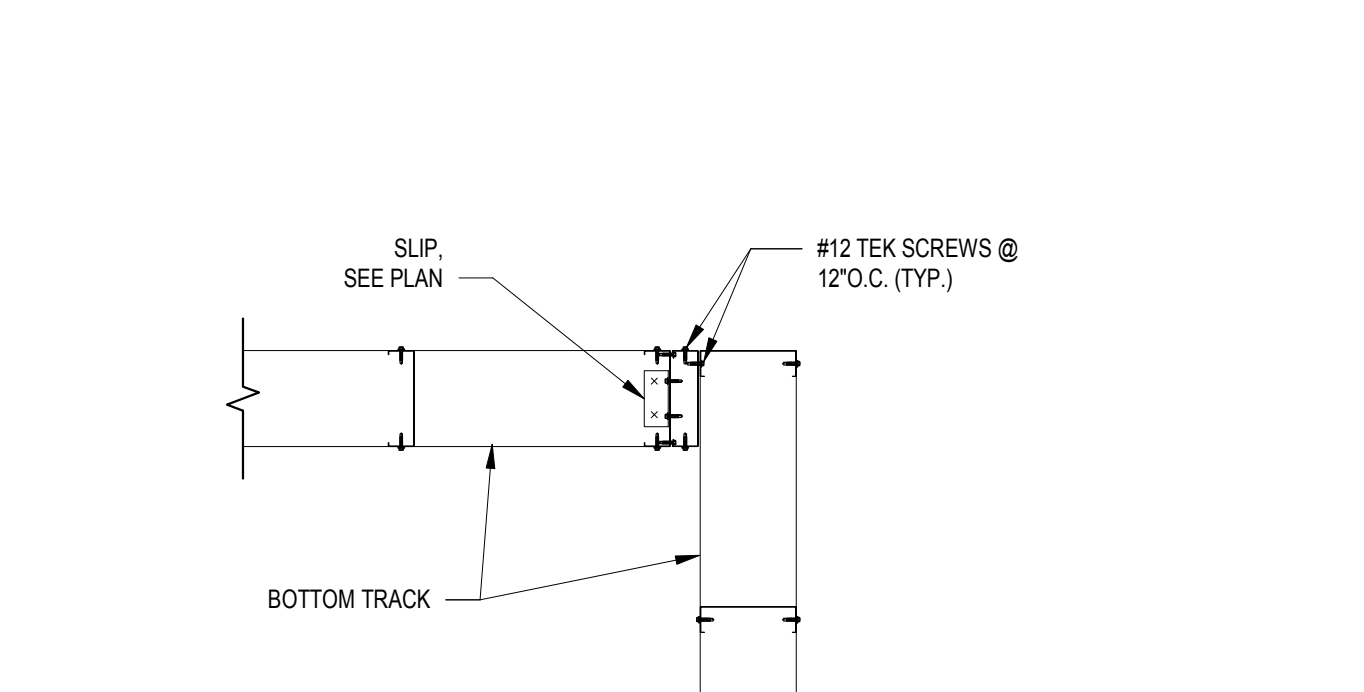
11 TYPICAL DETAIL - MULTIPLE STUD ATTACHMENT TO TOP TRACK AT STRUCTURE  
1" = 1'-0"



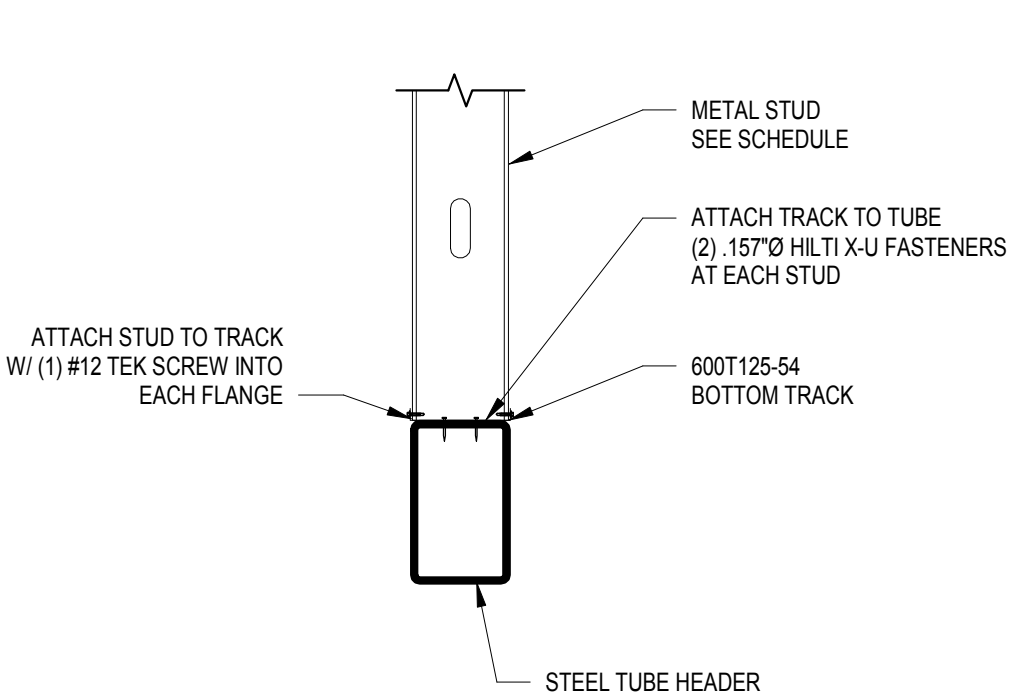
12 TYPICAL METAL STUD BYPASS CONNECTION  
1" = 1'-0"



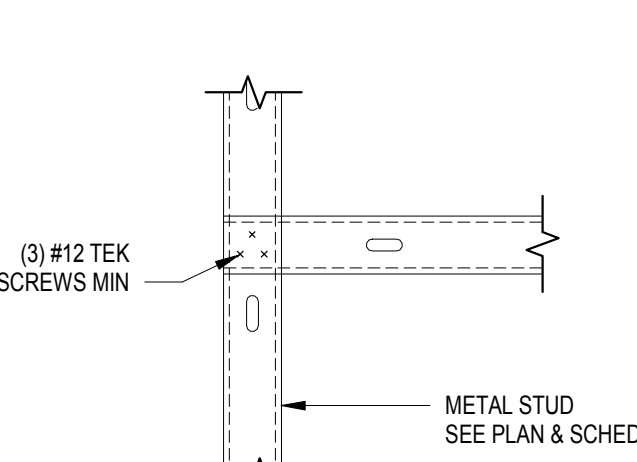
13 TYPICAL METAL STUD BYPASS CONNECTION  
1" = 1'-0"



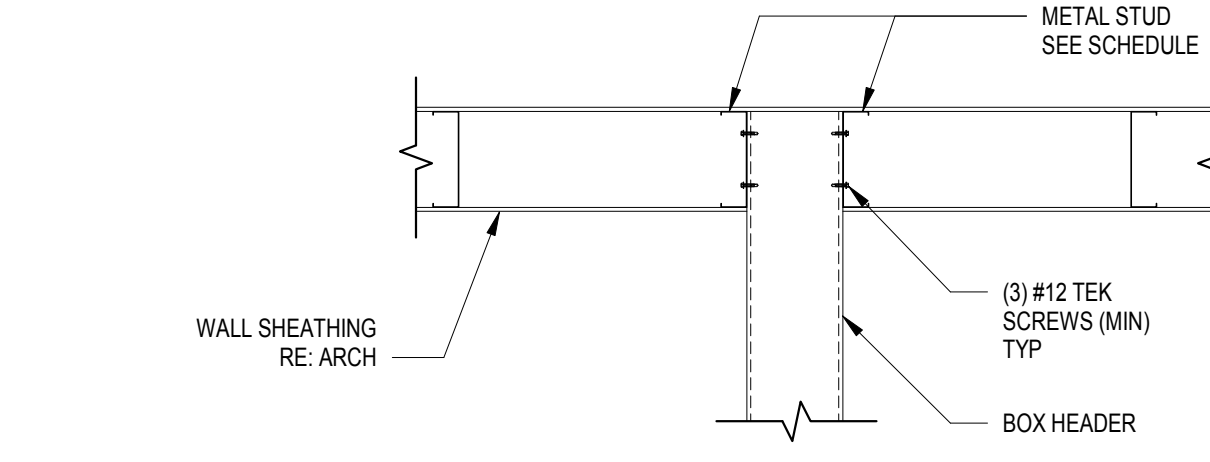
14 TYPICAL FRAMING AT END-WALL (PLAN VIEW)  
1" = 1'-0"



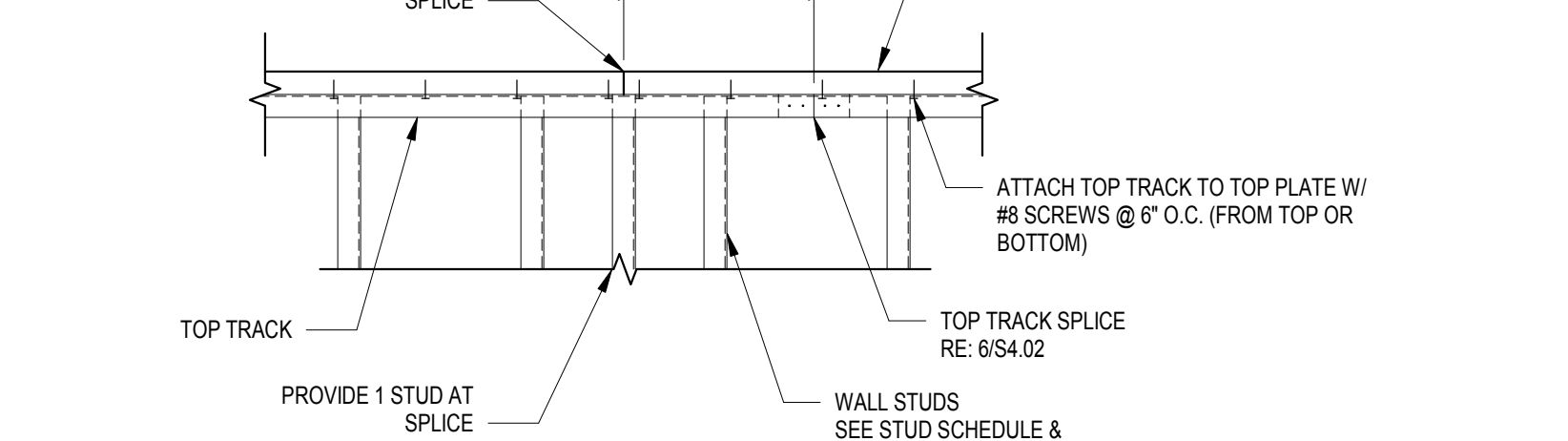
15 TYPICAL DETAIL - METAL STUD ATTACHMENT TO STEEL HEADER  
1" = 1'-0"



16 TYPICAL FRAMING AT SOFFIT CONNECTION  
1" = 1'-0"



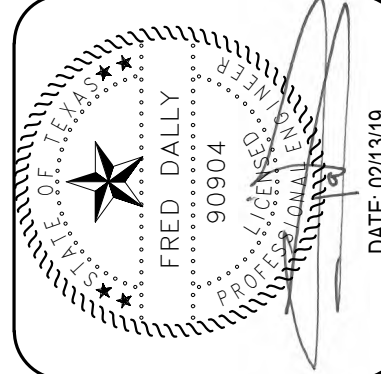
17 TYPICAL FRAMING AT BOX HEADER SUPPORT AT INTERSECTING WALL  
1" = 1'-0"



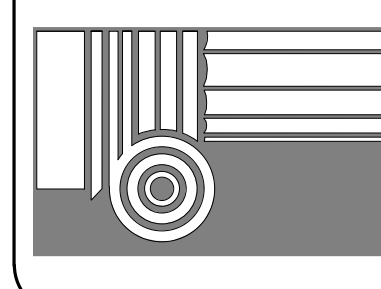
18 TYPICAL DETAIL - TOP PLATE TO TOP TRACK ATTACHMENT  
1" = 1'-0"

02/13/2019  
PERMIT / BID ISSUE

DATE: 02/13/2019



**CDA Architects**  
Member American Institute of Architects  
200445 State Hwy 249, Suite 200  
Houston, Texas 77070  
832/978-9232 Fax 832/978-9240



**ASHTON GRAY**  
DEVELOPMENT

TYPICAL LIGHT GAUGE DETAILS  
**10,720 SF Retail Shell**  
SPRING STUEBNER @ SPRING PLAZA  
SPRING, TEXAS 77389

SCALE: AS NOTED  
PROJECT: 191027  
DATE: 02/13/19  
S601  
PROJECT: 19-1013-00

**Dally**  
ASSOCIATES  
ARCHITECTURAL & CIVIL  
9600 Richmond Avenue, Suite 400  
Houston, Texas 77042  
713.337.8881  
Texas Registered Engineering Firm  
F-033408  
PROJECT: 19-1013-00